

KAWASAKI ZX-25R / ZX-4R / ZX-4RR SILENCER BRACKET SET

Be sure to read the instruction carefully before starting the work. It is necessary to follow the contents to install Yoshimura product.

Product information



- CAUTION** Before beginning installation, let motorcycle cool down.
- CAUTION** During the work, be careful not to damage each parts.
- CAUTION** Torque specification must be followed. If neglected, it may cause bolt and nut to fell off and damage to Yoshimura exhaust and motorcycle.

1. Product Information:

Description	KAWASAKI ZX-25R / ZX-4R / ZX-4RR Silencer Bracket Set	Part Number	194-247-0010
Application	KAWASAKI ZX-25R / ZX-4R / ZX-4RR	Main Material	Aluminum

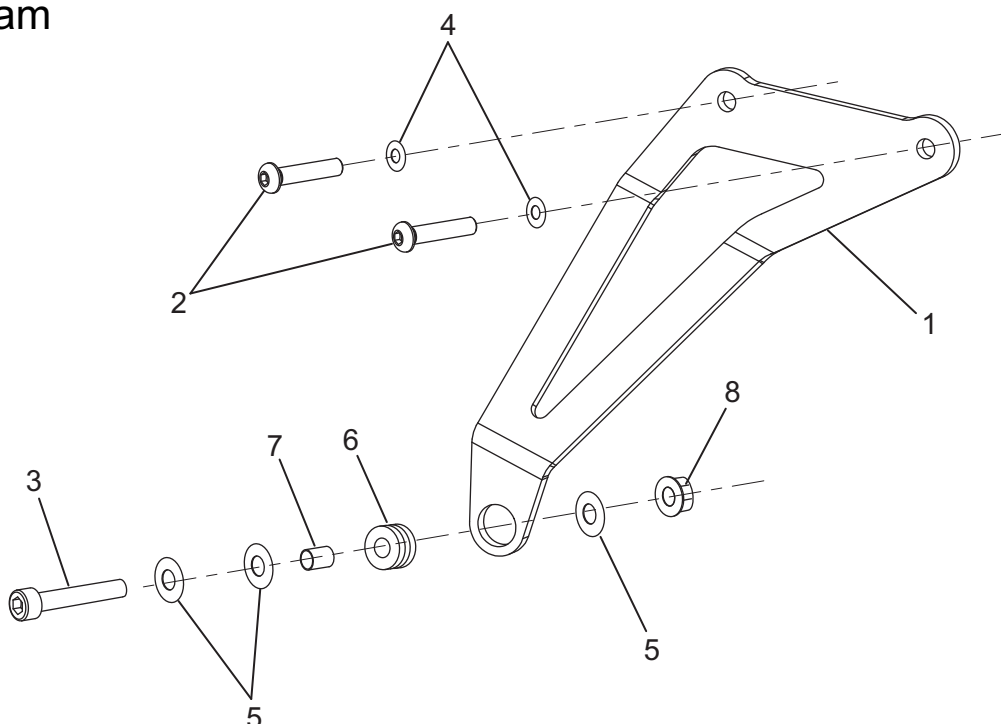
2. Contents:

No.	Descriptions	Part No.	Q'ty	No.	Descriptions	Part No.	Q'ty
1	Silencer Bracket	161-247-0210	1	5	Washer M8x26	812-108-2600	3
2	Button Bolt M8x25	803-208-5025	2	6	Grommet Rubber	553-565-0000	1
3	Cap Bolt M8x30	800-208-5030	1	7	Grommet Spacer	850-208-1212	1
4	Washer M8x16	812-108-1612	2	8	Flange Nut M8	823-008-1250	1

3. Applicable Product :

- SLIP-ON HEPTA FORCE TSS : STREET SPORTS / Part No. 180-248-L23G0 / -L26G0
- SLIP-ON HEPTA FORCE TSS for ZX-25R : JMCA APPROVED / Part No. 110-247-L23G0 / -L26G0
- SLIP-ON HEPTA FORCE TSS for ZX-4R/ZX-4RR : JMCA APPROVED / Part No. 110-248-L23G0 / -L26G0

Parts Diagram



4. Installation steps:

- 1) Check that all the component parts are in hand.
- 2) According to Genuine service manual, remove passenger's foot pegs from vehicle.

⚠ CAUTION When removing stock passenger's foot pegs, be careful not to damage sub frame or other components.

- 3) Mount Grommet Rubber and Grommet Spacer on Silencer Bracket. (See Fig. 1)

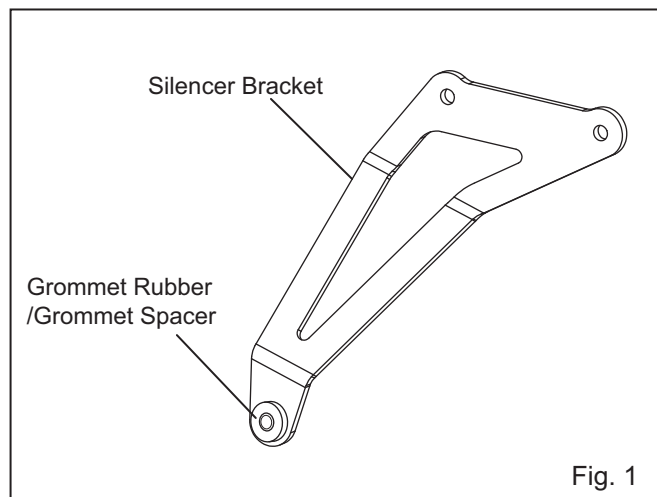


Fig. 1

- 4) Using 2 of each Button bolt M8x25 and Washer M8x16, mount Silencer Bracket on right side sub frame. (See Fig. 2) Then tighten and torque bolts.

Tightening Torque

Button bolt M8x25 : 23Nm

⚠ CAUTION Torque specification must be followed.

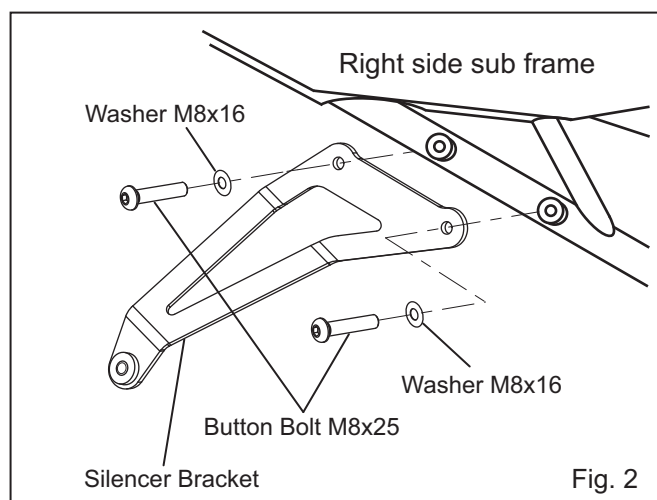


Fig. 2

- 5) Go to steps of HEPTA FORCE TSS STREET SPORTS / JMCA Slip-On installation instruction procedures.

- 6) After Silencer Bracket is mounted on Silencer Assy in the Slip-On installation instruction procedure, fix these 2 Silencer Brackets with Cap Bolt M8x30, 3 of Washer M8x26 and Flange Nut M8. (See Fig. 3) Tighten the bolt by hand only at this stage.

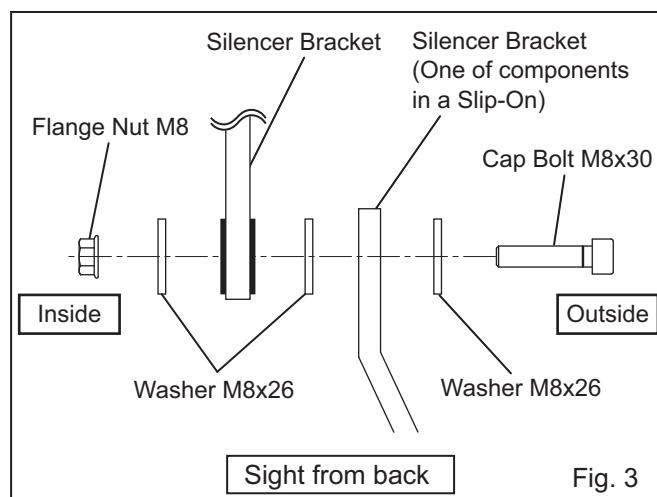


Fig. 3

- 7) Go to further steps of HEPTA FORCE TSS STREET SPORTS / JMCA Slip-On installation instruction procedures. Make sure to torque bolt on Silencer Assembly at the right procedure.

Tightening Torque

Cap Bolt M8x30 : 23Nm

⚠ CAUTION Torque specification must be followed.

- CAUTIONS AFTER INSTALLATION -

- ⊙ Check each bolt sometimes to see that there is no failure condition such as poor tightening.
- ⊙ Quality control is implemented on all products. If, however, any defect or failure is found, please notify Yoshimura Japan through the selling dealer. Necessary technical service or replacing of the product will be made.
- ⊙ Due to improvement, the specifications and price of the product are subject to change without notice.
- ⊙ For any information regarding this product, please address inquiries to Yoshimura Japan Co., Ltd.

Yoshimura Japan Co., Ltd.

6748 Nakatsu, Aikawa, Aiko, Kanagawa 243-0303 Japan

Web site: <http://www.yoshimura-jp.com> E-Mail: yj-world@yoshimura-jp.com