

## SUZUKI GSX-R1000/R OPTIONAL EXHAUST PIPE for R-11Sq R

Be sure to read the instruction carefully before starting the work. It is necessary to follow the contents to install Yoshimura product.

Product information



- CAUTION** Before beginning installation, let motorcycle cool down.
- CAUTION** Be sure not to damage each part during installation.
- CAUTION** Torque specification must be followed. If neglected, it may cause bolt and nut to fall off and damage to Yoshimura product and motorcycle.

### 1. Product Information :

Description	SUZUKI GSX-R1000/R Optional Exhaust Pipe for R-11Sq R		
Part Number	194-50A-0040	Main Material	Stainless steel
Cyclone Type	S50AS1QC3	Weight [STD : 7.2kg]	4.3kg

### 2. Applicable Model :

Applicable Model	SUZUKI GSX-R1000/R 17-
Application	Yoshimura Slip-On R-11Sq R only
	<SUZUKI GSX-R1000/R 17- EEC Slip-On R-11Sq R Euro4>
	Part number : 1F0-50A-L1xGx



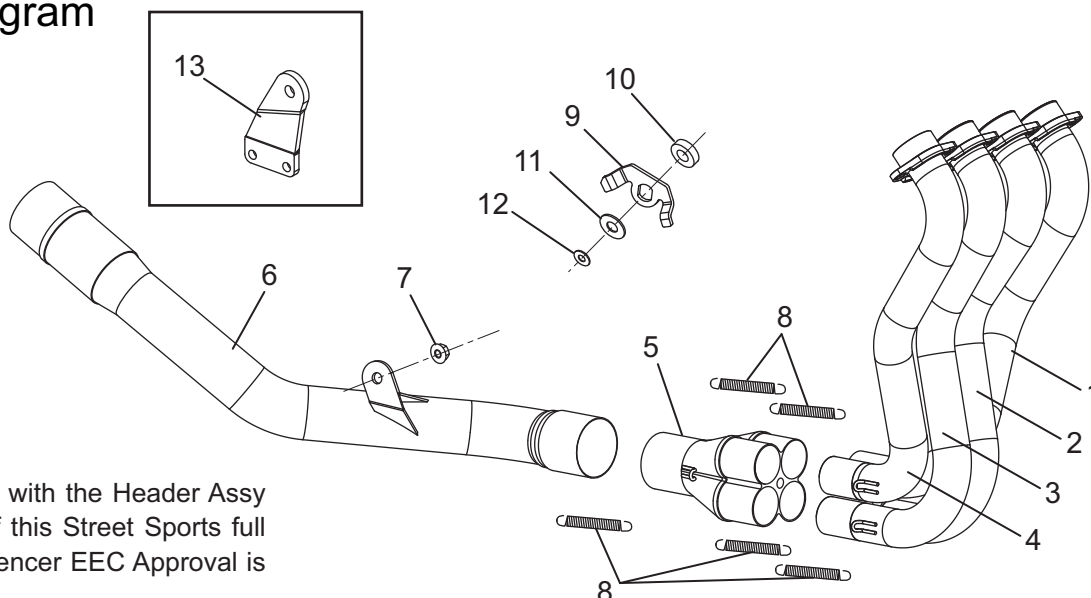
### 3. Optional Part :

Description	Part No.
SILENCER BRACKET SET	194-50A-0020

### 4. Contents:

No.	Descriptions	Part No.	Q'ty	No.	Descriptions	Part No.	Q'ty
1	Exhaust Pipe #1	181-50A-C100	1	9	Exhaust Control Valve Canceller Bracket	148-984-0021	1
2	Exhaust Pipe #2	182-50A-C100	1	10	Aluminum Spacer 12-20-7	860-012-2007	1
3	Exhaust Pipe #3	183-50A-C100	1	11	Washer M12	812-512-1815	1
4	Exhaust Pipe #4	184-50A-C100	1	12	Washer M5	812-205-1512	1
5	Exhaust Collector	119-414-5000	1	13	Silencer Bracket	161-50A-0270	1
6	Tailpipe	185-50A-C100	1	*	Spring Inner Tube	118-000-1100	5
7	Flange Nut M8	823-008-1250	1	*	Heat Resistant Sheet	896-001-005A	1
8	Exhaust Spring Long	118-000-1000	5				

### Parts Diagram



#### CAUTION

In combination with the Header Assy and Tailpipe of this Street Sports full system, the silencer EEC Approval is invalid.

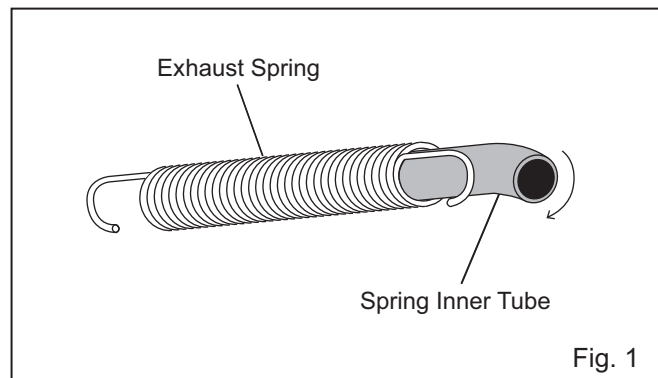
## 5. Installation steps:

- 1) Check that all the component parts are in hand.

- 2) Insert Spring Inner Tube into Exhaust Spring. (See Fig. 1)

**REFERENCE** It is normal that Spring Inner Tube is longer than Exhaust Spring. Inner Tube is hidden when Exhaust Spring is pulled.

**REFERENCE** Spring Inner Tube is easily inserted by rotating.



- 3) According to Suzuki service manual, remove side fairing, seat fairing and seat. Then, remove exhaust valve wires from stock exhaust pipe.

**! DANGER** Do not turn on ignition switch before complete the work at Step 9). If neglected, it may cause serious damage to Exhaust Control Valve Actuator (EXCVA).

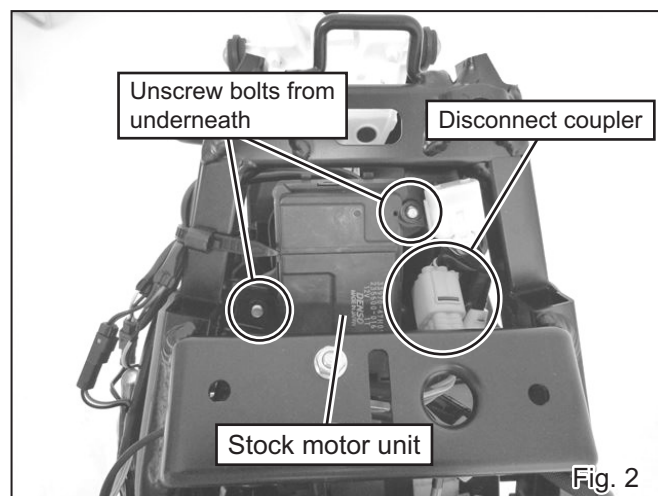
- 4) Be careful not to damage the frame and swing arm, remove stock silencer assy or Yoshimura Slip-on. When removing Yoshimura Slip-on from vehicle, not take out Silencer Bracket and Tailpipe from Silencer Assy.

- 5) Remove O2 sensor and connector on stock header assy.

**! CAUTION** Be careful not to damage the O2 sensor when removing. It is recommended to cover with soft cloth until remounted.

- 6) Remove stock rear fender and stock motor unit (See Fig. 2).

- 7) Remove exhaust valve wires from stock motor unit.



- 8) Remove stock bolt and stock motor pulley from stock motor unit.

**! CAUTION** Be careful not to turn stock motor pulley. If neglected, it may cause serious damage to stock motor unit.

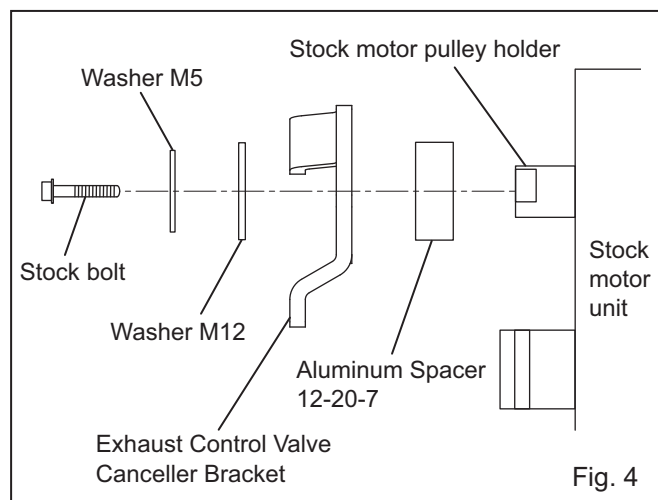
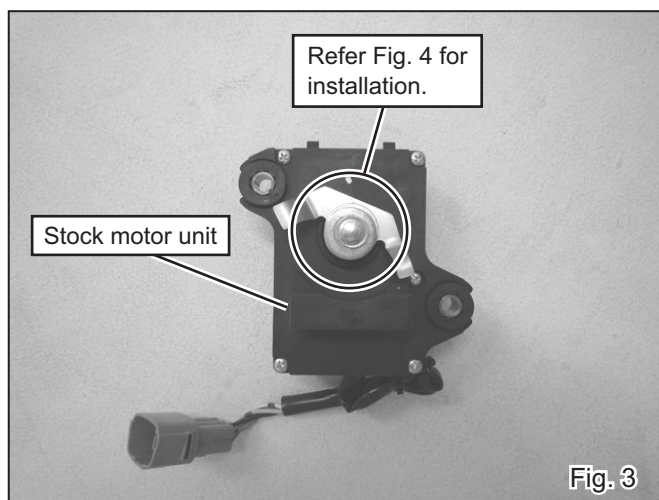
- 9) Install Exhaust Control Valve Canceller Bracket on stock motor unit with Aluminum Spacer 12-20-7, Washer M12, Washer M5 and stock bolt. Then, tighten and torque bolt (See Fig. 3 & 4 on next page).

**Tightening Torque** Stock bolt : 5Nm

**! CAUTION** Torque specification must be followed.

**! CAUTION** Be careful not to turn Exhaust Control Valve Canceller Bracket when tighten and torque stock bolt. If neglected, it may cause serious damage to stock motor unit.

\*Make sure to mount Exhaust Control Valve Canceller Bracket in right direction.



- 10) Re-install stock motor unit, rear fender, seat fairing and seat.

- 11) Remove stock bolts on radiator and oil cooler and move them to forward. Then, remove stock header assy.

**CAUTION** Be careful not to damage radiator/oil cooler cores when removing stock header assy.

- 12) Check sticker numbers on Exhaust Collector and install 4 of Exhaust Pipe in the right place from #4 >> #3 >> #1 >> #2 in order. Then, fit chips on Exhaust Pipe #1 and #3 to recesses on Exhaust Collector, adjust the position of Exhaust Pipe #1 and #4 to engine wide and install 4 of Exhaust Spring Long. (See Fig. 5)

**CAUTION** Make sure that Exhaust Spring is hooked to spring installation tool firmly. If neglected, it may cause injury.

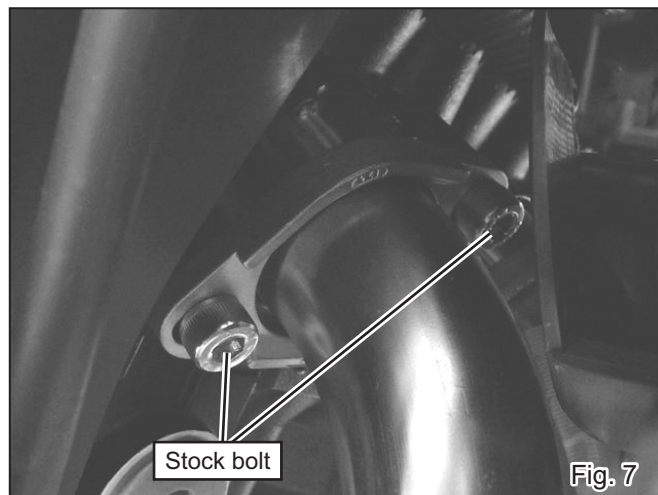
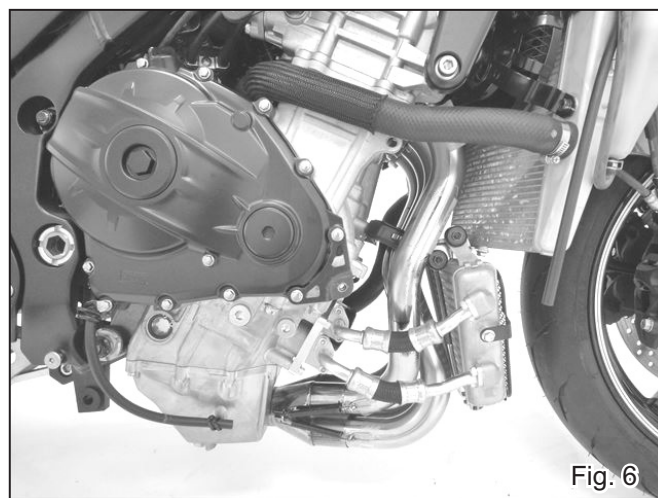
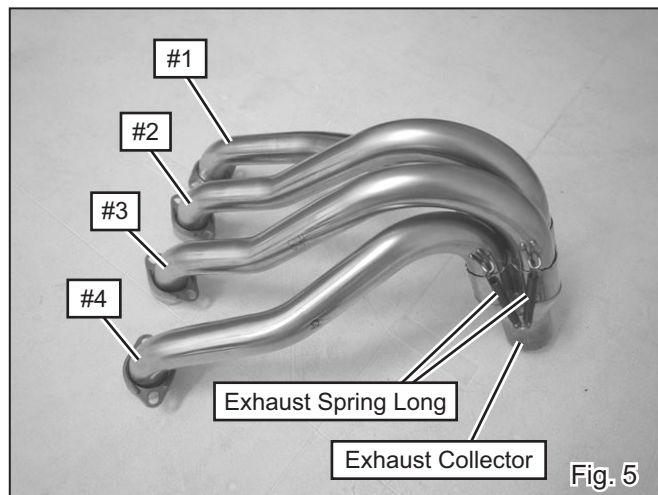
- 13) Peel stickers on Exhaust Collector and wipe down grease completely.

**CAUTION** Make sure to remove stickers and grease during the installation. This will help prevent tarnishing of finish after exhaust system is heated up.

- 14) Replace exhaust gaskets on all the exhaust ports with new ones and mount header assy (assembled at Step. 12) to exhaust ports and fix it with 8 of stock bolt (See Fig. 6 & 7). Tighten bolts by hand only at this stage.

**CAUTION** Be careful not to damage radiator/oil cooler cores when mounting header assy.

**REFERENCE** Use new Suzuki genuine exhaust gaskets.



- 15) Install Tailpipe to Exhaust Collector and fix them with Exhaust Spring Long (See Fig. 8).

**CAUTION** Make sure that Exhaust Spring is hooked to spring installation tool firmly. If neglected, it may cause injury.

- 16) Mount Tailpipe on stock header bracket with stock bolt and Flange Nut M8 (See Fig. 8 & 9). Tighten bolt by hand only at this stage.

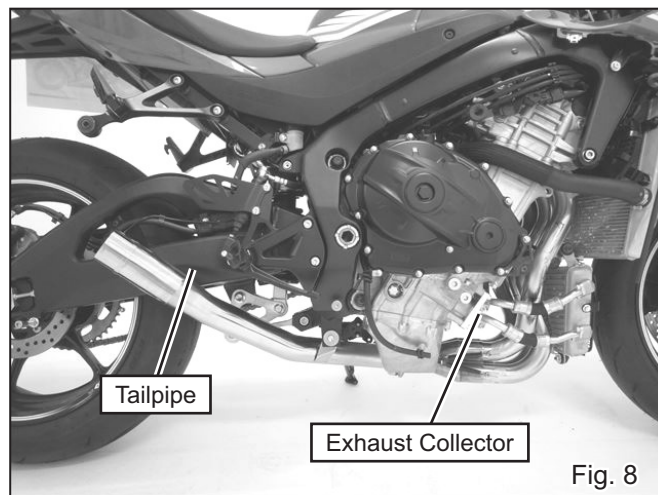


Fig. 8

- 17) Remove Exhaust Spring and Tailpipe from Silencer Assy which is removed at Step 4).

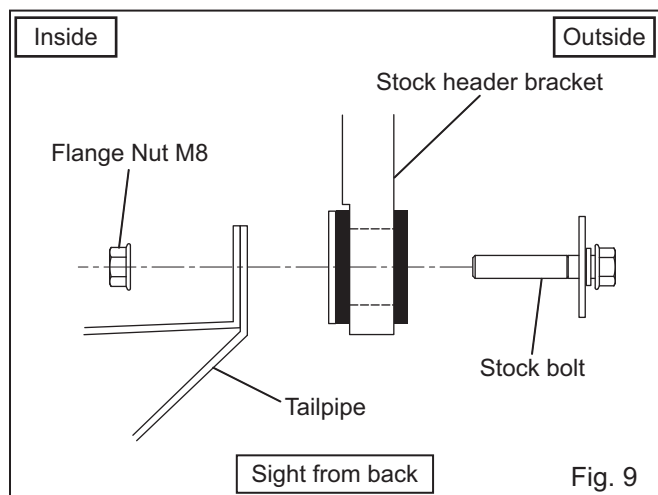


Fig. 9

- 18) Replace Silencer Bracket supplied in the Slip-on set to the one from Optional Exhaust Pipe, and mount it on Silencer assy with 2 of each Button Bolt M6x20, Washer M6x16 and Flange Nut M6 (See Fig. 10). Tighten the bolts by hand only at this stage.

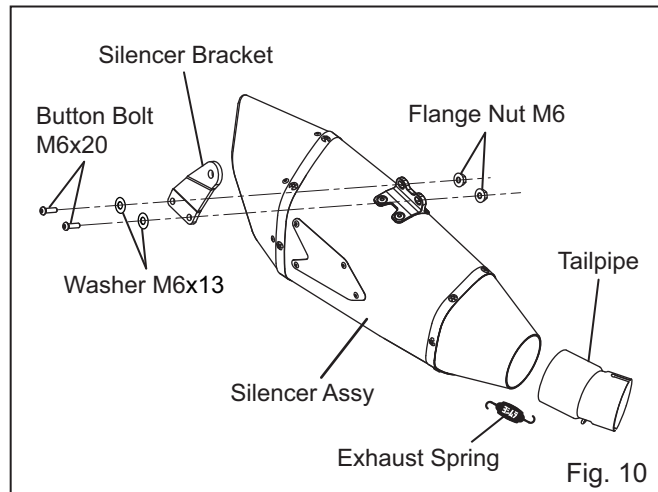


Fig. 10

- 18) Install Silencer Assy into Tailpipe, and mount Silencer Assy to stock silencer bracket with Washer M8x26, stock bolt, washer and nut (See Fig. 11 & 12). Tighten the bolt by hand only at this stage.

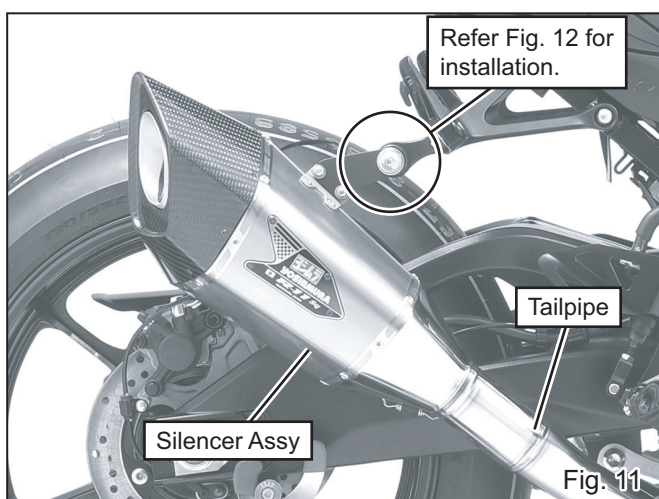


Fig. 11

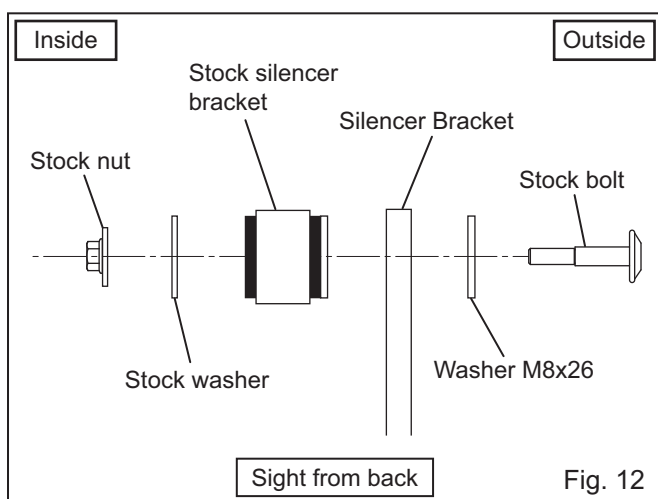


Fig. 12



- 19) Fixed Silencer Assy and Tailpipe with Exhaust Spring Short (See Fig. 13).

- 20) Check that there are proper clearances between Yoshimura exhaust system and other components. Then, tighten and torque 8 of stock bolt on exhaust ports, stock bolt on tailpipe bracket, 2 of Button Bolt M6x20 and stock bolt on Silencer Bracket in order (see Fig. 14).

**Tightening Torque**

Stock bolt (Exhaust ports)	: 15Nm
Stock bolt (Tailpipe)	: 23Nm
Button Bolt M6x20 (Silencer Bracket)	: 10Nm
Stock bolt (Silencer Bracket)	: 23Nm

**CAUTION** Torque specification must be followed.

- 21) Install O2 sensor which is removed at Step 5) on Exhaust Collector, tighten with the specified torque and connector the O2 sensor coupler to the vehicle.

**Tightening Torque** O2 sensor : 25Nm

**CAUTION** Torque specification must be followed.

- 22) Check proper clearances between header assy and other components such as radiator or engine and between Tailpipe or Silencer Assy and swing arm, etc. In case there is no clearance, loosen bolts and re-adjust the position of exhaust pipes.

- 23) It is recommended that whole Yoshimura exhaust system to be wiped down with dish soap to remove oil and fingerprints. This will prevent tarnishing of finish after the exhaust system is heated up.

**CAUTION** When cleaning silencer, use soft cloth with dish soap. Do not use metal polish or parts cleaner. If neglect, the paint of Emblem and Metal Magic finish may come off or Titanium Blue color may tarnish.

- 24) Warm-up engine, and inspect the exhaust leakage. If exhaust leakage is found, seal the gaps of joint with silicone gasket etc. Tighten all bolts further after engine is cooled down. If any problem is found, please follow through instruction steps carefully again.

**REFERENCE** It is normal for new silencer to smoke until inside oil residue burns off.

- 25) Re-mount fairings.

**REFERENCE** Apply Heat Resistant Sheet where fairing and exhaust pipe is close and it prevents fairing from burning. However it is recommended to keep 5mm or more clearance between fairing and Yoshimura exhaust system. If it is closer, adjust the position or cut minimum part of fairing (See Fig. 15 on next page). If neglected, damage of fairing is not included in warranty.

**REFERENCE** When replacing oil filter, use oil filter wrench like the sample shown on Fig. 16 on next page.

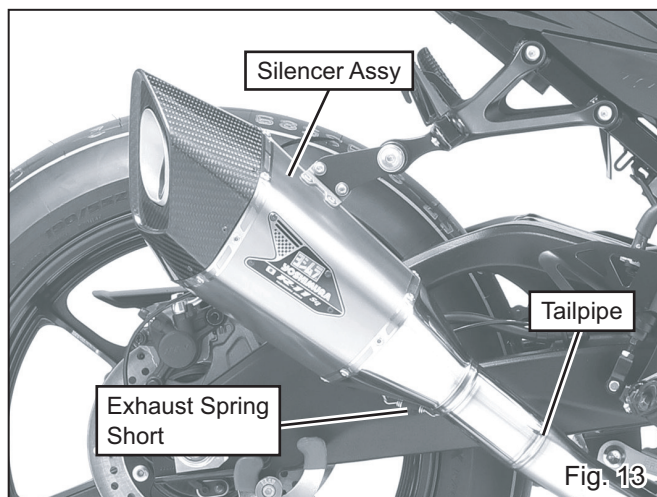


Fig. 13

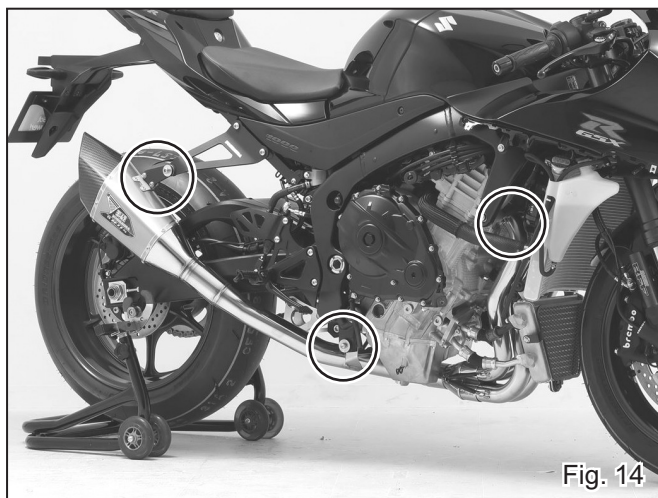


Fig. 14

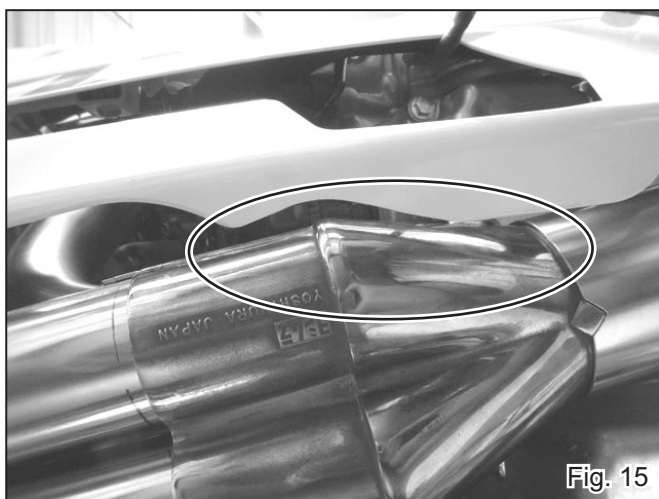


Fig. 15

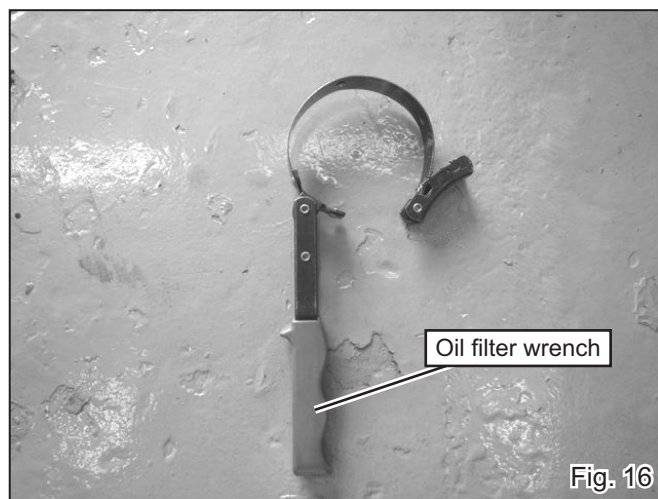


Fig. 16

### After Installation



#### ! CAUTION

When using Street Sports Full System R-11Sq for GSX-R1000/R L7 (P/N. 180-50A-C1xG0), it is highly recommended to NOT take out dB killer SD#140 from silencer assy. If neglected, any trouble/damage is not included in warranty.

Without SD#140 (pre-installed), RH turn signal tend to be heated by exhaust gas and it would cause a damage under certain circumstances.

#### ! CAUTION

This exhaust is produced for street use only. In case that it is used on race circuit or tested on chassis dynamometer, any damage or carbon discoloration is not included in warranty.

#### ! CAUTION

Yoshimura Japan recommends to replace silencer inner wool every 5,000km (3,000miles) in order to get Yoshimura exhaust performances fully.

However, inner wool possibly worn out faster under certain circumstances even if less mileage.

Climate conditions and riding styles are factors which directly result in inner wool worn out. Keeping high engine revolution also causes further wool consumption.

Using Yoshimura exhaust with deteriorated inner wool causes lower performance and may damage the silencer and vehicle.

For further information about inner wool replacement, please contact local Yoshimura distributors.

#### REFERENCE

Yoshimura Japan recommends to replace silencer inner wool when 50g of silencer weight is reduced.

#### - CAUTIONS AFTER INSTALLATION -

- ⊙ Check each bolt sometimes to see that there is no failure condition such as poor tightening.
- ⊙ Quality control is implemented on all products. If, however, any defect or failure is found, please notify Yoshimura Japan through the selling dealer. Necessary technical service or replacing of the product will be made.
- ⊙ Due to improvement, the specifications and price of the product are subject to change without notice.
- ⊙ For any information regarding this product, please address inquiries to Yoshimura Japan Co., Ltd.

Yoshimura Japan Co., Ltd.

6748 Nakatsu, Aikawa, Aiko, Kanagawa 243-0303 Japan

Web site: <http://www.yoshimura-jp.com> E-Mail: [yj-world@yoshimura-jp.com](mailto:yj-world@yoshimura-jp.com)