

KAWASAKI Z900('20) STREET SPORTS SLIP-ON R-11

Be sure to read the instruction carefully before starting the work. It is necessary to follow the contents to install Yoshimura product.

Product information



- CAUTION** Before beginning installation, let motorcycle cool down.
- CAUTION** Be sure not to damage each part during installation.
- CAUTION** Torque specification must be followed. If neglected, it may cause bolt and nut to fall off and damage to Yoshimura product and motorcycle.
- CAUTION** Metal Magic sleeve is coated with heat-resistant paint. Handle with care not to be hit or scratched by surroundings as the coating may come off. When cleaning silencer, use soft cloth with dish soap but do not use metal polish or chemical cleaner.
- CAUTION** Titanium Blue sleeve is colored by anodizing. Handle with care as the color may change. When cleaning silencer, use soft cloth with dish soap but do not use metal polish or chemical cleaner.

1. Product Information :

Description	KAWASAKI Z900('20) Street Sports Slip-On R-11		
Main Material	Stainless steel		
Cyclone Type	K268S11C1		
Weight [STD 3.9kg]	(SM) & (SSF)	: 2.3kg	Part Number
	(STB)	: 2.1kg	
		Metal Magic Sleeve (SM)	: 180-268A5E20
		Satin Finish Sleeve (SSF)	: 180-268A5E30
		Titanium Blue Sleeve (STB)	: 180-268A5E80B

2. Applicable Model :

Model	KAWASAKI Z900('20)
-------	--------------------

3. Optional Part :

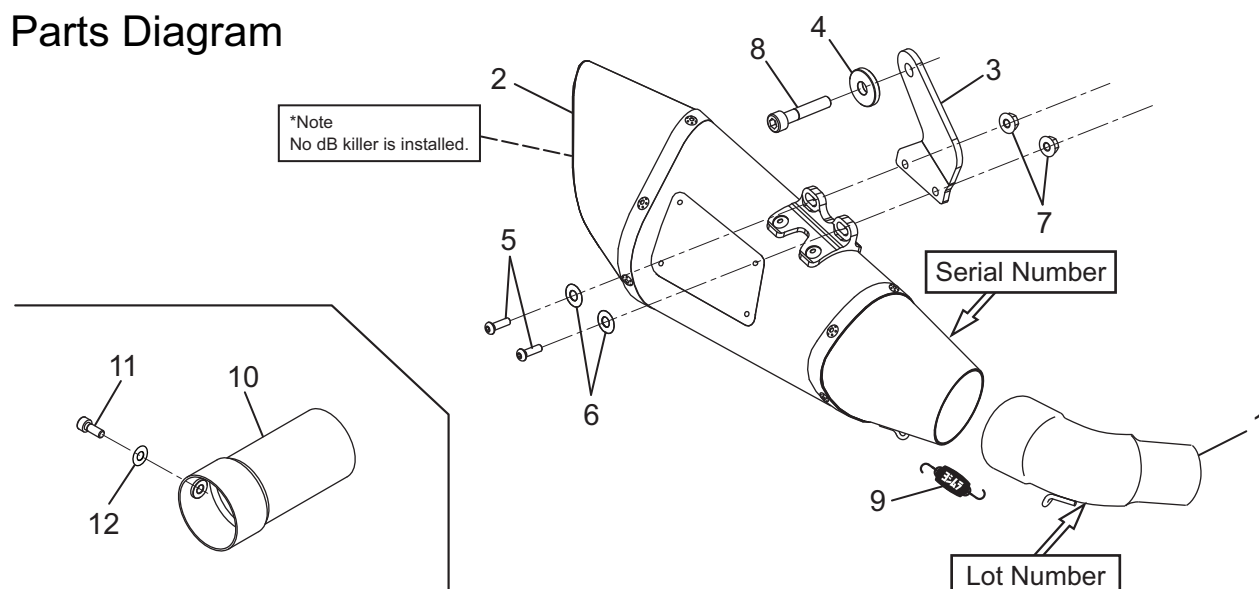
Description	Part No.
Carbon Heat Guard (*1)	161-279-0610
Z900('20) Optional Exhaust Pipe Set for R-11	194-268-0010

(*1: Carbon Heat Guard is possible to mount only on the OEM header and not applicable for Optional Exhaust Pipe.)

4. Contents :

No.	Descriptions	Part No.	Q'ty	No.	Descriptions	Part No.	Q'ty
1	Tailpipe	185-268-5E00	1	6	Washer M6x13	812-206-1310	2
2	Silencer Assy Metal Magic Sleeve	186-279-5E20	1	7	Flange Nut M6	823-006-1000	2
	Silencer Assy Satin Finish Sleeve	186-279-5E30		8	Cap Bolt M10x65P1.25	800-210-5065	1
	Silencer Assy Titanium Blue Sleeve	186-279-5E80B		9	Exhaust Spring	118-001-0000	1
3	Silencer Bracket	161-279-0200	1	10	SD#136	138-138-45D6	1
4	Spacer 10-30-5	850-010-3005	1	11	Cap Bolt M6x8 Thread Lock	800-806-4008	1
5	Button Bolt M6x20	803-206-4020	2	12	Conical Spring Washer M6	811-106-0000	1

Parts Diagram



5. Installation steps:

- 1) Check that all the component parts are in hand.

- 2) According to KAWASAKI service manual, remove stock muffler guard, silencer assembly and gasket from vehicle (See Fig. 1).

CAUTION When removing stock silencer assembly and heat guard, be careful not to damage swing arm and other components.

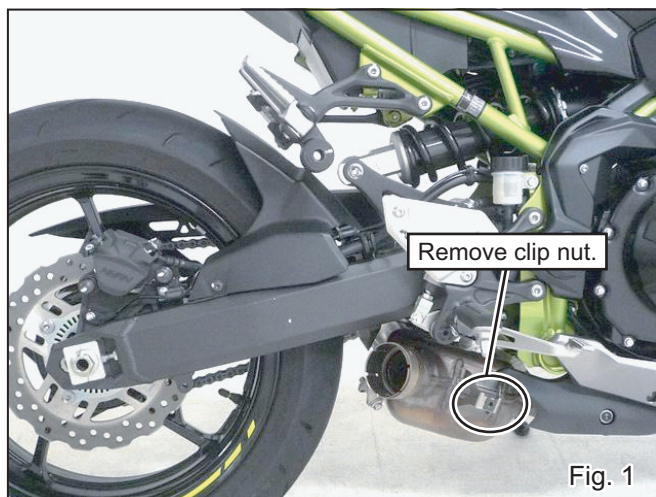


Fig. 1

- 3) Remove clip nut from stock chamber (See Fig. 1).

REFERENCE Remain this clip nut on stock chamber in case mounting optional Carbon Heat Guard.

- 4) Attach Silencer Bracket on to Silencer Assy with 2 of each Button Bolt M6x20, Washer M6x13 and Flange Nut M6 (See Fig. 2). Tighten the bolts by hand only at this stage.

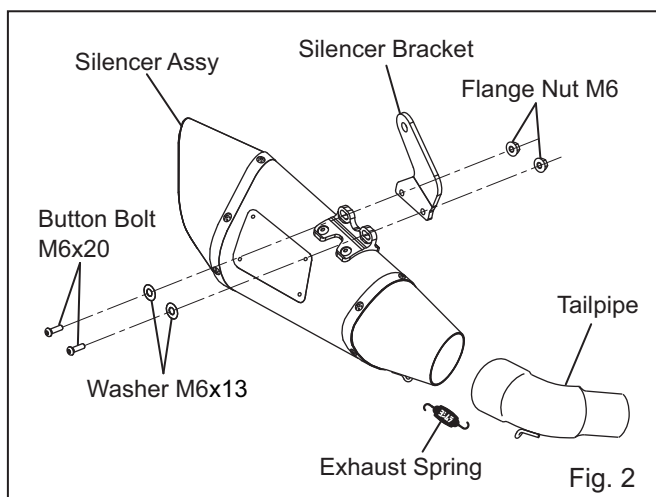


Fig. 2

- 5) Install Silencer Assy to Tailpipe and fix them with Exhaust Spring (See Fig. 2).

CAUTION Make sure that exhaust spring is hooked to spring installation tool firmly. If neglected, it may cause injury.

- 6) Install SD#136 with Conical Spring Washer M6 and Torx Cap Bolt M6x8 Thread Lock if necessary (See Fig. 3).

REFERENCE

Stock exhaust sound	: 97dB / 4,750rpm
Without dB Killer	: 98dB / 4,750rpm
With SD#136	: 97dB / 4,750rpm

Tightening Torque Torx Cap Bolt M6x8 : 10Nm

CAUTION Torque specification must be followed.

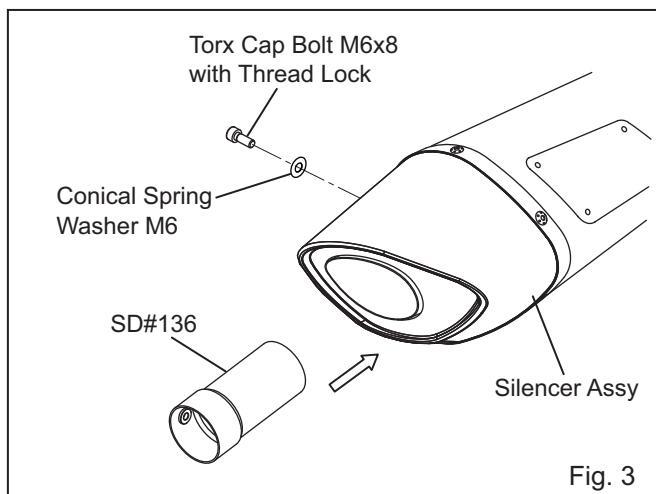
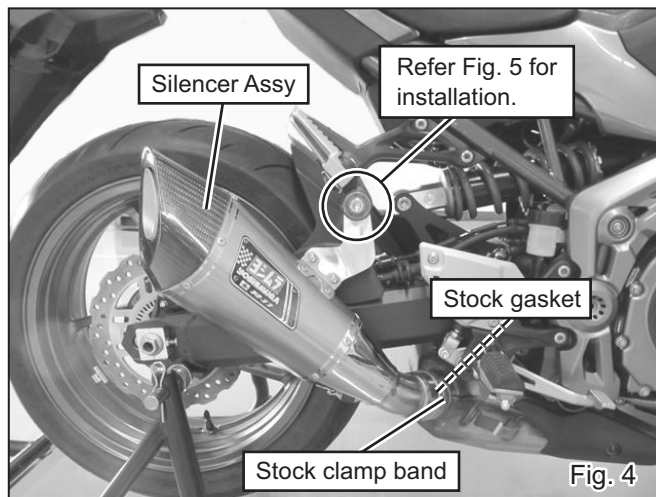


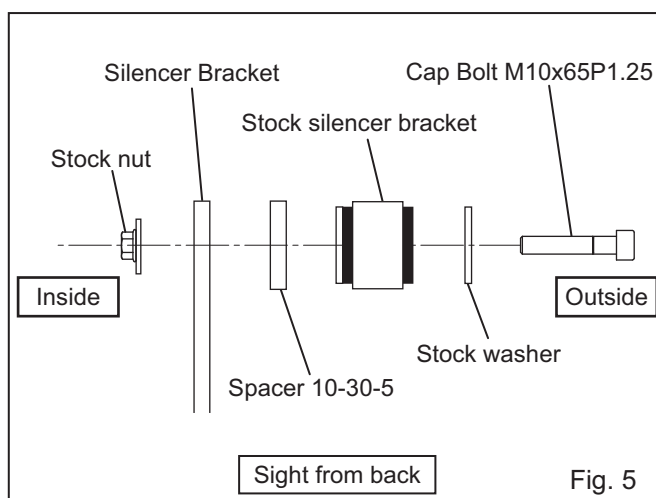
Fig. 3

- 7) Install KAWASAKI genuine gasket into stock chamber. Then, install Silencer Assy and Tailpipe (assembled at Step. 5) to stock tailpipe (See Fig. 4). Tighten the bolt on stock clamp band by hand only at this stage.

CAUTION Use KAWASAKI genuine new gasket.



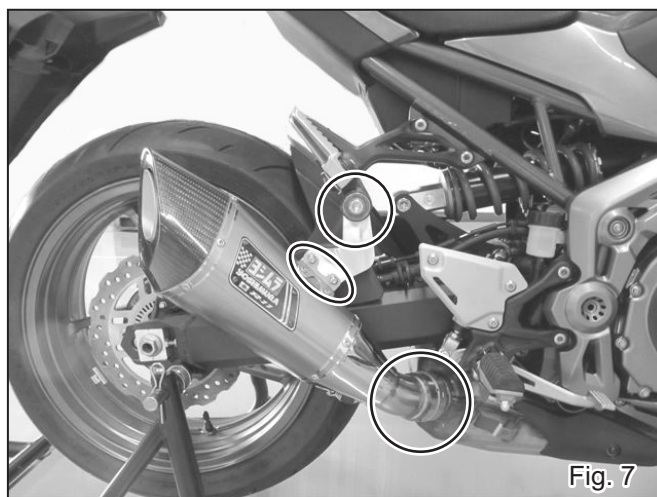
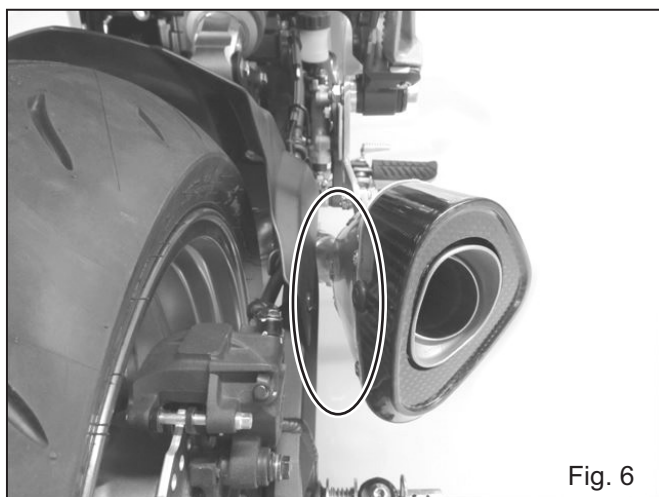
- 8) Mount Silencer Assy to stock silencer bracket with Cap Bolt M10x65P1.25, Spacer 10-30-5, stock washer and nut (See Fig. 5). Tighten the bolt by hand only at this stage.



- 9) Check that there are proper clearances between Yoshimura slip-on and other components. Then, tighten and torque Button Bolt M6x20 and Cap Bolt M10x65P1.25 on Silencer Bracket, stock clamp band in order (See Fig. 6 & 7).

Tightening Torque	Button Bolt M6x20	: 10Nm
	Cap Bolt M10x65P1.25	: 28Nm
	Clamp Band	: 15Nm

CAUTION Torque specification must be followed.



- 10) It is recommended that whole Yoshimura slip-on to be wiped down with dish soap to remove oil and fingerprints. This will prevent tarnishing of finish after the slip-on is heated up.

CAUTION When cleaning silencer, use soft cloth with dish soap. Do not use metal polish or parts cleaner. If neglect, the paint of Emblem and Metal Magic finish may come off or Titanium Blue color may tarnish.

- 11) Warm-up engine, and inspect the exhaust leakage. Tighten all bolts and nuts further after engine is cooled down.
- 12) If "after fire" sounds severely, seal the gaps between Tailpipe and Silencer Assy with silicone gasket etc. Sealing gaps further after engine is cooled down.

After Installation with Carbon Heat Guard



⚠ CAUTION

Titanium Blue sleeve is colored by anodizing. Handle with care as the color may change. When cleaning silencer, use soft cloth with dish soap but do not use metal polish or chemical cleaner.

⚠ CAUTION

This exhaust is produced for street use only. In case that it is used on race circuit or tested on chassis, any damage or carbon discoloration is not included in warranty.

REFERENCE

Yoshimura Japan recommends silencer inner wool replacement every 5,000km (3,000miles) in order to get Yoshimura exhaust performance fully. Climate, riding condition, and frequency of ride are direct contributing factors for inner wool worn out. Keeping high engine revolution also promotes further wool consumption. For silencer repairing, please contact local Yoshimura distributor for further information.

- CAUTIONS AFTER INSTALLATION -

- ⊙ Check each bolt sometimes to see that there is no failure condition such as poor tightening.
- ⊙ Quality control is implemented on all products. If, however, any defect or failure is found, please notify Yoshimura Japan through the selling dealer. Necessary technical service or replacing of the product will be made.
- ⊙ Due to improvement, the specifications and price of the product are subject to change without notice.
- ⊙ For any information regarding this product, please address inquiries to Yoshimura Japan Co., Ltd.

Yoshimura Japan Co., Ltd.

6748 Nakatsu, Aikawa, Aiko, Kanagawa 243-0303 Japan

Web site: <http://www.yoshimura-jp.com> E-Mail: yj-world@yoshimura-jp.com