

SUZUKI GSX-S750 / GSR750 STREET SPORTS FULL SYSTEM R-11 Single Exit

Product information



Be sure to read the instruction carefully before starting the work. It is necessary to follow the contents to install Yoshimura product.

- CAUTION** Before beginning installation, let motorcycle cool down.
- CAUTION** Be sure not to damage each part during installation.
- CAUTION** Torque specification must be followed. If neglected, it may cause bolt and nut to fall off and damage to Yoshimura product and motorcycle.
- CAUTION** Metal Magic sleeve is coated with heat-resistant paint. Handle with care not to be hit or scratched by surroundings as the coating may come off. When cleaning silencer, use soft cloth with dish soap but do not use metal polish or chemical cleaner.
- CAUTION** Titanium Blue sleeve is colored by anodizing. Handle with care as the color may change. When cleaning silencer, use soft cloth with dish soap but do not use metal polish or chemical cleaner.

1. Product Information :

Description	SUZUKI GSX-S750 / GSR750 Street Sports Full System R-11 Single Exit <small>Note: Exhaust Control Valve Cancellor is required for GSR750.</small>			
Part Number	Metal Magic Sleeve (SM)	: 170-150-5F20	Cyclone Type	S150S11C1
	Satin Finish Sleeve (SSF)	: 170-150-5F30	Main Material	Stainless steel
	Titanium Blue Sleeve (STB)	: 170-150-5F80B	Weight	(SM) & (SSF) : 5.8kg
			[STD : 9.3kg]	(STB) : 5.6kg

2. Contents:

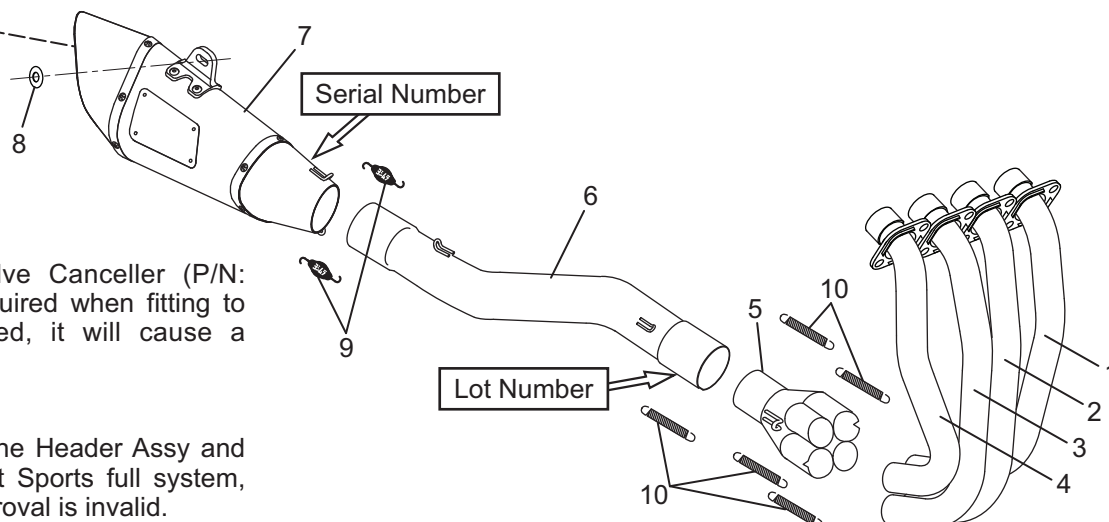
No.	Descriptions	Part No.	Q'ty	No.	Descriptions	Part No.	Q'ty
1	Exhaust Pipe #1	171-150-5F00	1	8	Washer M8x26	812-108-2600	1
2	Exhaust Pipe #2	172-150-5F00	1	9	Exhaust Spring (Short)	118-001-0000	2
3	Exhaust Pipe #3	173-150-5F00	1	10	Exhaust Spring (Long)	118-000-1000	5
4	Exhaust Pipe #4	174-150-5F00	1	*	Spring Inner Tube	118-000-1100	5
5	Exhaust Collector	119-501-5000	1				
6	Tailpipe	175-150-5F00	1				
7	Silencer Assy, (SM)	1A6-158-5E20	1				
	Silencer Assy, (SSF)	1A6-158-5E30					
	Silencer Assy, (STB)	1A6-158-5E80					

3. Optional Part :

Description	Part No.
Carbon Heat Guard Set TYPE-2	161-000-A620

Parts Diagram

SD#97 (Pre-installed)
Parts No. : 138-138-2797-01



CAUTION

Exhaust Control Valve Cancellor (P/N: 194-519-0021) is required when fitting to GSR750. If neglected, it will cause a serious damage.

CAUTION

In combination with the Header Assy and Tailpipe of this Street Sports full system, the silencer EEC Approval is invalid.

4. Installation steps:

- 1) Check all the component parts are in hand.
- 2) According to Suzuki service manual, remove O2 sensor both from connector and stock exhaust system. If the vehicle is GSR750, remove exhaust valve wire. Then remove stock exhaust system from vehicle. (See Fig.1)

! DANGER If the vehicle is GSR750, do not turn on ignition switch before complete the work at Step 9). If neglected, it may cause serious damage to Exhaust Control Valve Actuator (EXCVA).

REFERENCE If the vehicle is GSR750, Exhaust Control Valve Canceller (P/N: 194-519-0021) is required. Follow the installation instruction manual to install the canceller.

! CAUTION Be careful not to damage the O2 sensor when removing. It is recommended to cover with soft cloth until remounted.

REFERENCE Removed O2 sensor is used when installing Yoshimura full system.



Fig. 1

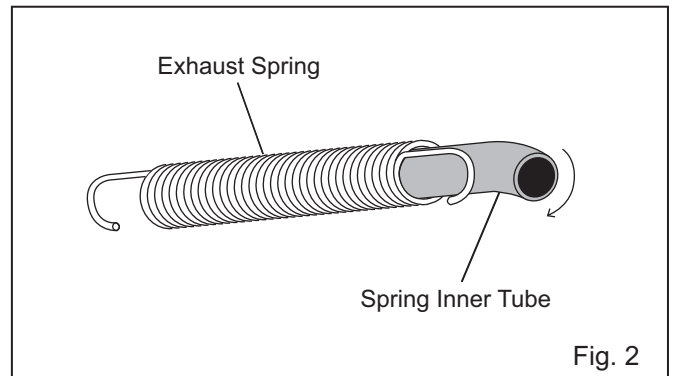


Fig. 2

- 3) Insert Spring Inner Tube into Exhaust Spring. (See Fig. 2)

REFERENCE It is normal that Spring Inner Tube is longer than Exhaust Spring. Inner Tube is hidden when Exhaust Spring is pulled.

REFERENCE Spring Inner Tube is easily inserted by rotating.

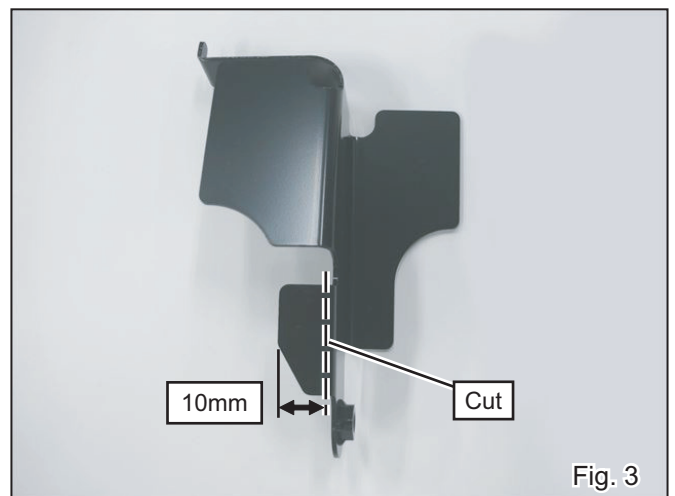


Fig. 3

- 4) Check the genuine radiator bracket shape. If it is same as Fig. 3., cut off the piece along the line.

REFERENCE Bracket shape is different depending on the year model.

- 5) Check the numbers of stickers on Exhaust Collector and install Exhaust Pipes in the right place from #4 >>> #3 >>> #1 >>> #2 in order. Then fit chips on Exhaust Pipes #1 and #3 to recesses on Exhaust Collector, adjust the positions of Exhaust Pipes #1 and #4 to engine wide and install 4 of Exhaust Spring Long. (See Fig. 4)

! CAUTION Make sure that Exhaust Spring is hooked to spring installation tool firmly. If neglected, it may cause injury.

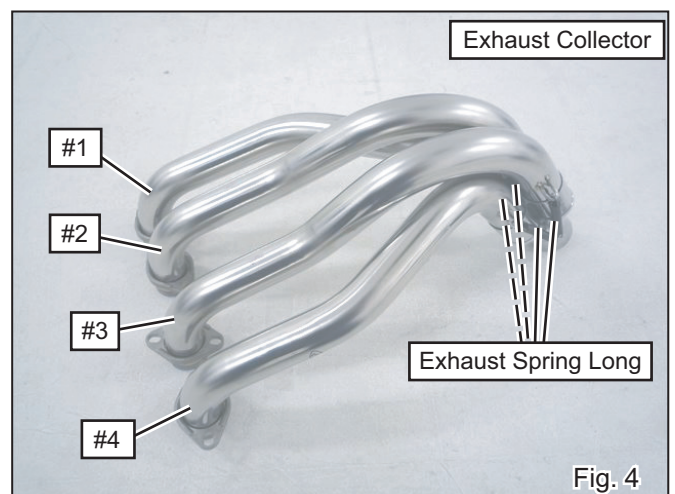


Fig. 4

- 6) Peel stickers on Exhaust Collector and wipe down grease completely.

CAUTION Make sure to remove stickers and remove grease during the installation. This will help prevent tarnishing of finish after exhaust system is heated up.

- 7) Replace exhaust gaskets on all the exhaust ports with new ones and mount Exhaust Pipes assembly which is completed at Step 5 to exhaust ports and fix it with 8 of stock bolt. Tighten bolts by hand only at this stage. (See Fig. 5 & 6)

- 8) Install O2 sensor which is removed at Step 2) on Tailpipe. Tighten it with the specified torque.

Tightening Torque O2 sensor : 25Nm

CAUTION Torque specification must be followed.

- 9) Insert Tailpipe to Exhaust Collector and install Exhaust Spring. (See Fig. 8)

CAUTION Pay attention on the O2 sensor and not to hit it while installation.

CAUTION Make sure that Exhaust Spring is hooked to spring installation tool firmly. If neglected, it may cause injury.

- 10) Reconnect O2 sensor coupler and fix the wire with zip tie.

- 11) Install Silencer Assy to Tailpipe and fix them with 2 of Exhaust Spring (See Fig 9 on next page).

CAUTION Make sure that exhaust spring is hooked to spring installation tool firmly. If neglected, it may cause injury.

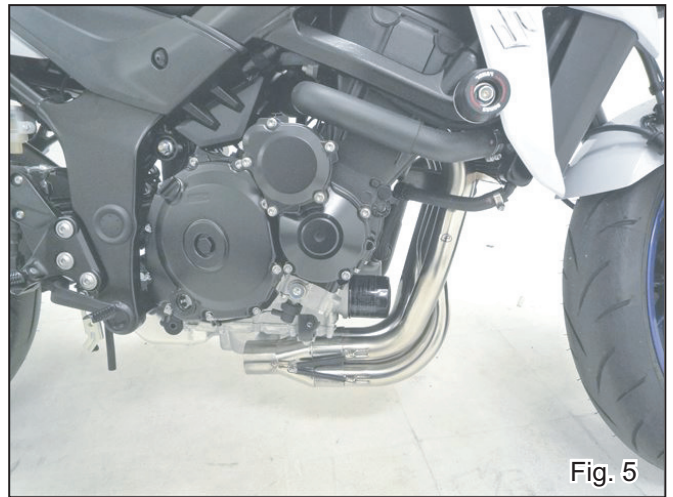


Fig. 5

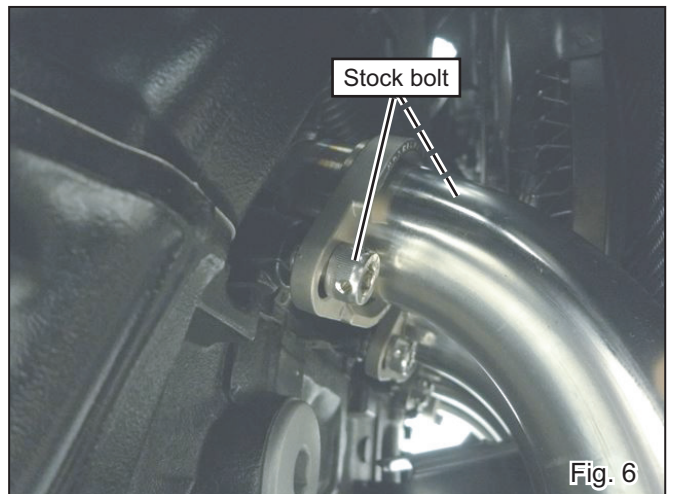


Fig. 6

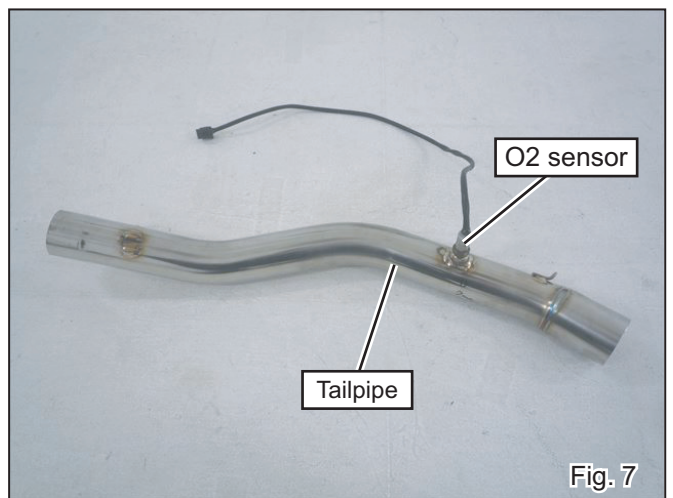


Fig. 7

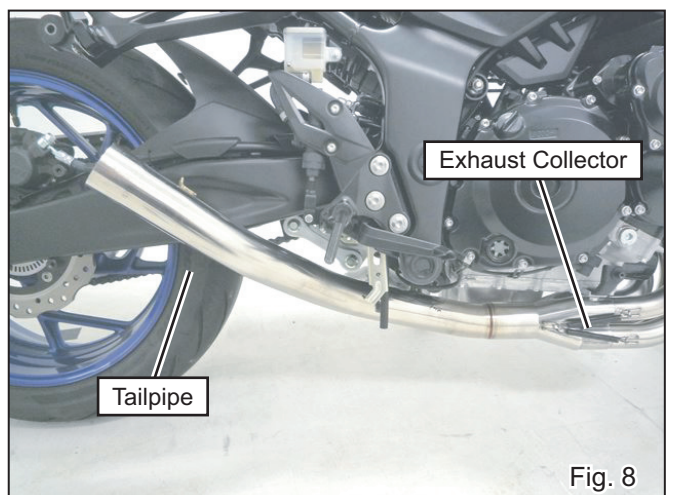
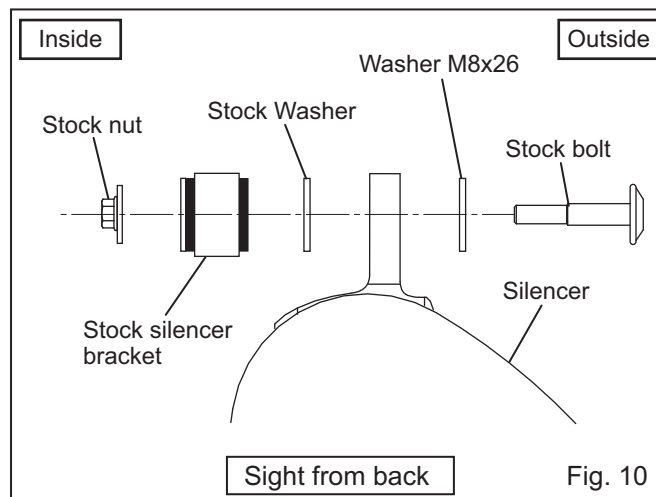
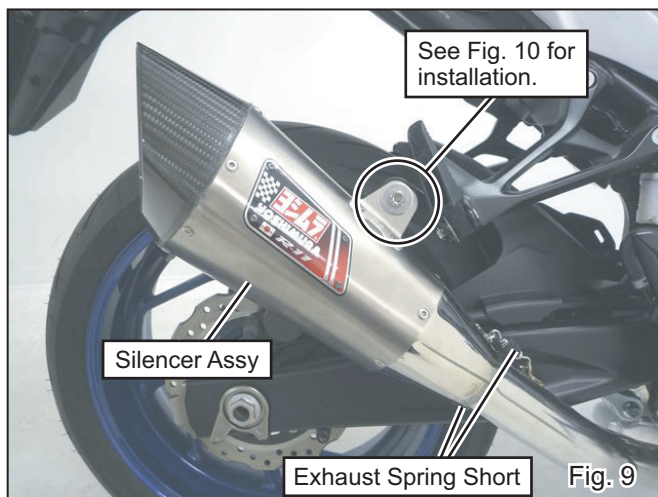


Fig. 8



- 12) Mount Silencer Assy to stock silencer bracket with stock bolt, washer, nut and Washer M8x26 (See Fig. 9 & 10). Tighten the bolt by hand only at this stage.

- 13) Check that there are proper clearances between Yoshimura exhaust system and other components. Then, tighten and torque bolts at exhaust port and Silencer in order. (See Fig 11 & 12)

Tightening Torque

Stock bolt at exhaust port : 15Nm
Stock bolt at Silencer : 23Nm

CAUTION Torque specification must be followed.



- 14) It is recommended that whole Yoshimura exhaust system is wiped down with dish soap to remove oil and fingerprints. This will prevent tarnishing of finish after the exhaust system is heated up.

CAUTION When cleaning Silencer Assembly, use soft cloth with dish soap. Do not use metal polish or parts cleaner. If neglected, the paint of Emblem may come off or Titanium Blue color may tarnish.

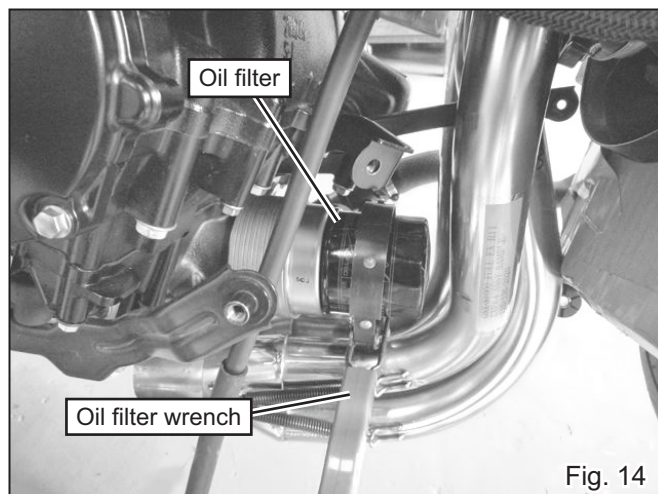
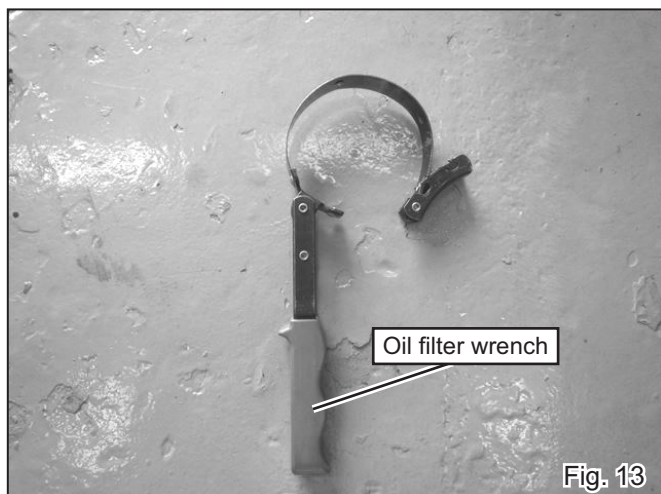


- 15) Warm-up engine, and inspect the exhaust leakage. If exhaust leakage is found, seal the gaps of joint with silicone gasket etc. Tighten all bolts further after engine is cooled down. If any problem is found, please follow through instruction steps carefully again.

REFERENCE It is normal for new silencer to smoke until inside oil residue burns off.

16) Reinstall fairing.

REFERENCE When replacing oil filter, use oil filter wrench like the sample shown on Fig. 13. (See Fig. 14)



After Installation



CAUTION

Titanium Blue sleeve is colored by anodizing. Handle with care as the color may change. When cleaning silencer, use soft cloth with dish soap but do not use metal polish or chemical cleaner.

CAUTION

This exhaust is produced for street use only. In case that it is used on race circuit or tested on chassis dynamometer, any damage or carbon discoloration is not included in warranty.

REFERENCE

Yoshimura Japan recommends silencer inner wool replacement every 5,000km (3,000miles) in order to get Yoshimura exhaust performance fully. Climate, riding condition, and frequency of ride are direct contributing factors for inner wool worn out. Keeping high engine revolution also promotes further wool consumption. For silencer repairing, please contact local Yoshimura distributor for further information.

- CAUTIONS AFTER INSTALLATION -

- ⊙ Check each bolt sometimes to see that there is no failure condition such as poor tightening.
- ⊙ Quality control is implemented on all products. If, however, any defect or failure is found, please notify Yoshimura Japan through the selling dealer. Necessary technical service or replacing of the product will be made.
- ⊙ Due to improvement, the specifications and price of the product are subject to change without notice.
- ⊙ For any information regarding this product, please address inquiries to Yoshimura Japan Co., Ltd.

Yoshimura Japan Co., Ltd.

6748 Nakatsu, Aikawa, Aiko, Kanagawa 243-0303 Japan

Web site: <http://www.yoshimura-jp.com> E-Mail: yj-world@yoshimura-jp.com