

## HONDA MONKEY125 STREET SPORTS FULL SYSTEM GP-MAGNUM DOWN TYPE

Product information



Be sure to read the instruction carefully before starting the work. It is necessary to follow the contents to install Yoshimura product.

- CAUTION** Before beginning installation, let motorcycle cool down.
- CAUTION** Be sure not to damage each part during installation.
- CAUTION** Torque specification must be followed. If neglected, it may cause bolt and nut to fall off and damage to Yoshimura product and motorcycle.
- CAUTION** Titanium Blue sleeve is colored by anodizing. Handle with care as the color may change. When cleaning silencer, use soft cloth with dish soap but do not use metal polish or chemical cleaner.

### 1. Product Information :

Description	HONDA Monkey125 Street Sports Full System GP-MAGNUM Down Type		
Part Number	Stainless Sleeve (SS) : 180A-400-5U51	Cyclone Type	H400SCI11
	Satin Finsh Sleeve (SSF) : 180A-400-5U31	Main Material	Stainless steel
	Titanium Blue Sleeve (STB) : 180A-400-5U81B	Weight [STD : 5.0kg]	(SS) & (SSF) : 2.4kg
	Carbon Sleeve (SC) : 180A-400-5U91		(STB) : 2.2kg
			(SC) : 2.1kg

### 2. Applicable Model :

Model	Monkey125(18-21)
-------	------------------

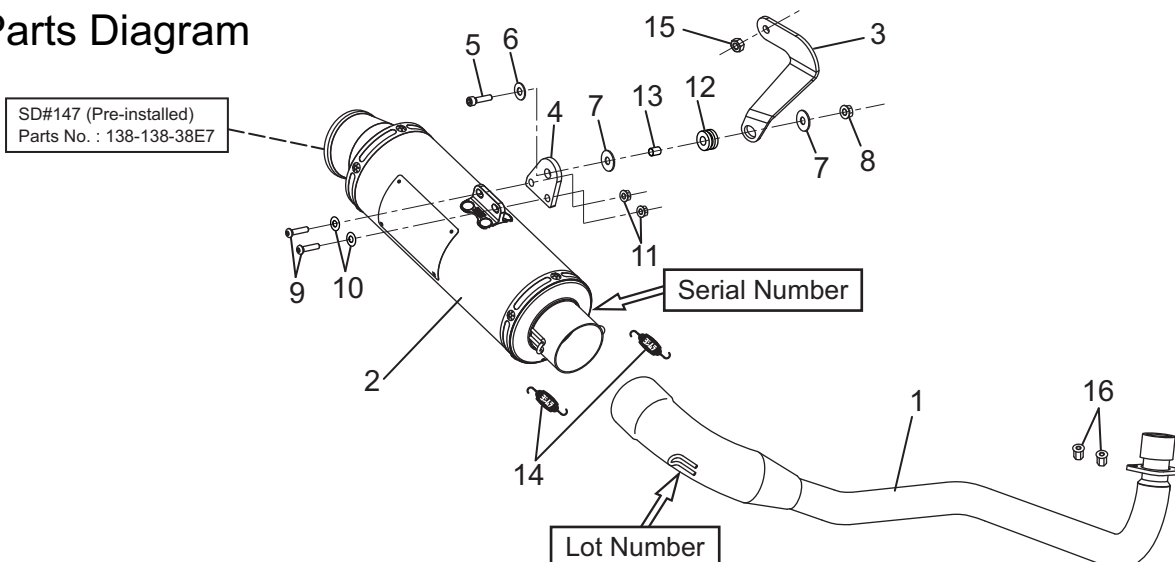
### 3. Contents:

No.	Descriptions	Part No.	Q'ty	No.	Descriptions	Part No.	Q'ty
1	Exhaust Pipe	181-400-5U00	1	8	Flange Nut M8	823-008-1250	1
2	Silencer Assy, SS	186-400-5U51	1	9	Button Bolt M6x20	803-206-4020	2
	Silencer Assy, SSF	186-400-5U31		10	Washer M6x13	812-206-1310	2
	Silencer Assy, STB	186-400-5U81B		11	Flange Nut M6	823-006-1000	2
	Silencer Assy, SC	186-400-5U91		12	Grommet Rubber	553-565-0000	1
				13	Grommet Spacer	850-208-1212	1
3	Silencer Bracket #1	161-400-0200	1	14	Exhaust Spring	118-001-0000	2
4	Silencer Bracket #2	161-523-0220	1	15	Thin U-Nut M10 P1.25	820-010-1251	1
5	Cap Bolt M8x30	800-208-5030	1	16	Long Flange Nut M8	823-008-1252	2
6	Washer M8x20	812-108-2000	1				
7	Washer M8x26	812-108-2600	2				

### 4. Optional Part :

Description	Part No.
Side Cover	516-400-1100

### Parts Diagram



## 5. Installation steps:

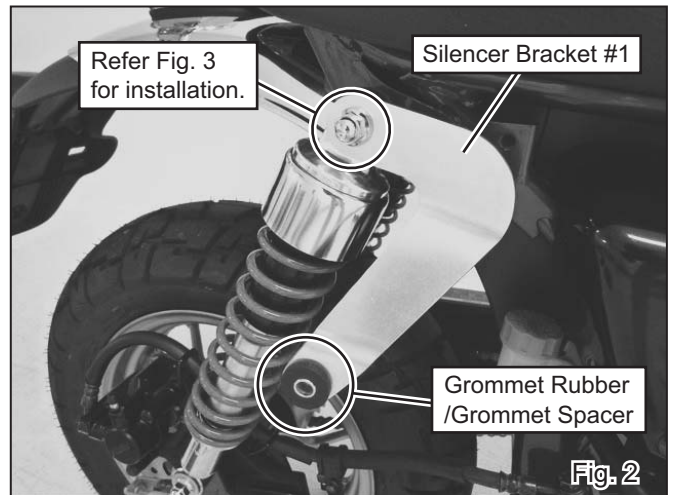
- 1) Check that all the component parts are in hand.
- 2) According to HONDA service manual, remove stock exhaust system (See Fig. 1).

**CAUTION** When removing stock exhaust system, be careful not to damage frame or other components.

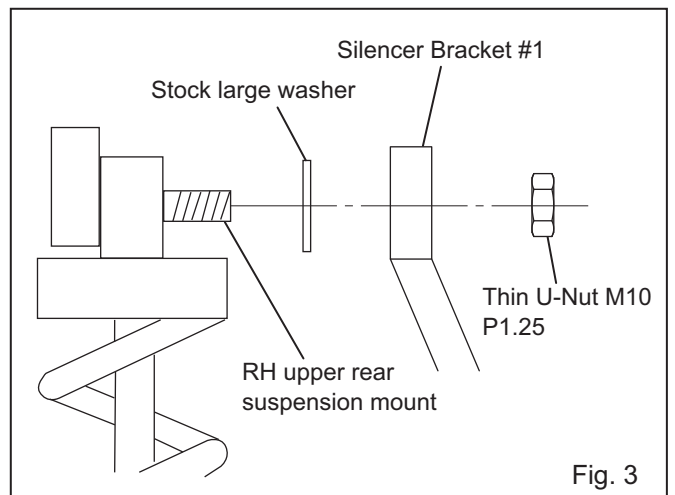
**REFERENCE** Stock nuts and bolt removed at this stage are reused when mounting Yoshimura product.



- 3) Attach Grommet Rubber and Grommet Spacer to Silencer Bracket #1. Remove stock nut and washers on RH upper rear suspension mount, and attach Silencer Bracket #1 with Thin U-Nut M10 P1.25 and large washer (See Fig. 2 & 3). Tighten the nut by hand only at this stage.

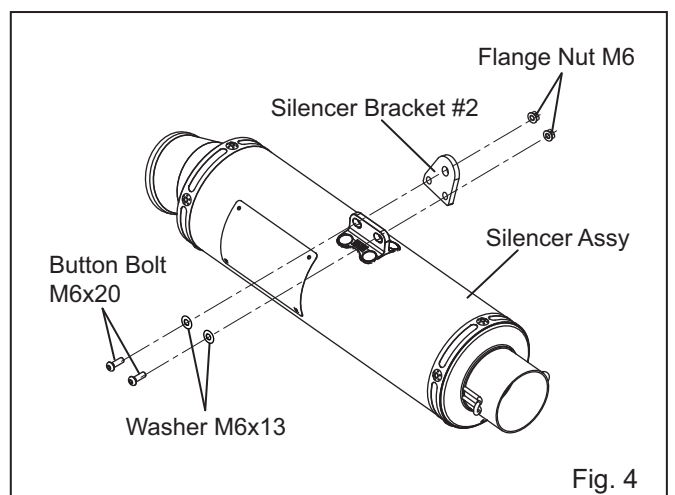


- 4) Mount Silencer Bracket #2 onto Silencer Assy with 2 of each Button Bolt M6x20, Washer M6x13 and Flange Nut M6 (See Fig. 4). Tighten bolts by hand only at this stage.



- 5) Replace stock gasket at exhaust port of engine with new one. Then, mount Exhaust Pipe with 2 of Long Flange Nut M8 (See Fig. 5 & 6 on next page). Tighten nuts by hand only at this stage.

**CAUTION** Use Honda genuine new exhaust gasket.



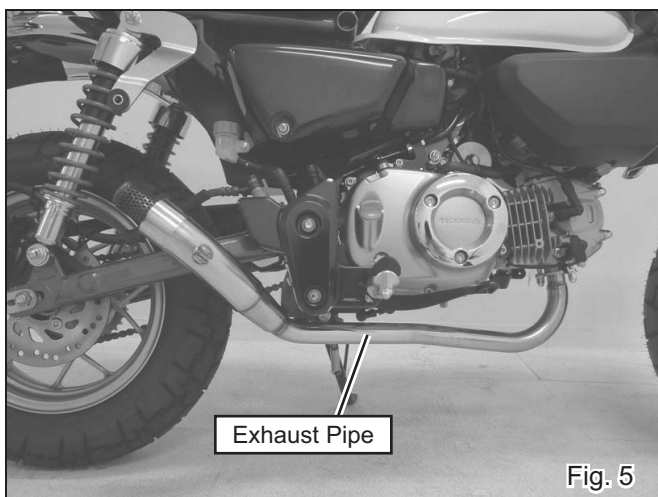


Fig. 5

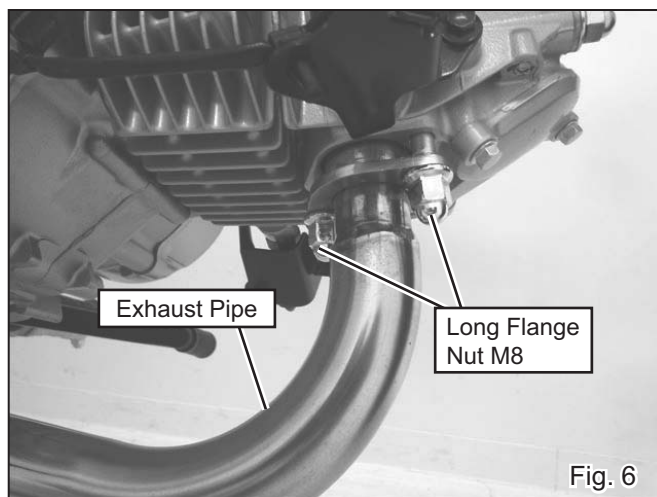


Fig. 6

- 6) Install Silencer Assy to Exhaust Pipe and fix them with 2 of Exhaust Spring (See Fig. 7).

**CAUTION** Make sure that exhaust spring is hooked to spring installation tool firmly. If neglected, it may cause injury.

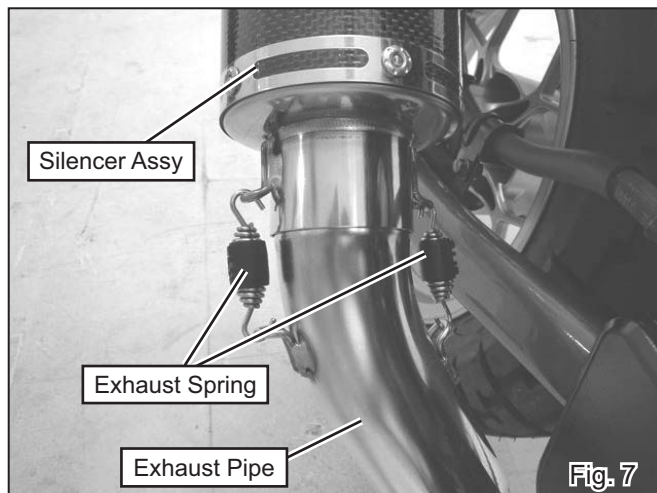


Fig. 7

- 7) Mount Silencer Assy to Silencer Bracket #1 with Cap Bolt M8x30, Washer M8x20, 2 of Washer M8x26 and Flange Nut M8 (See Fig. 8 & 9). Tighten the bolt by hand only at this stage.

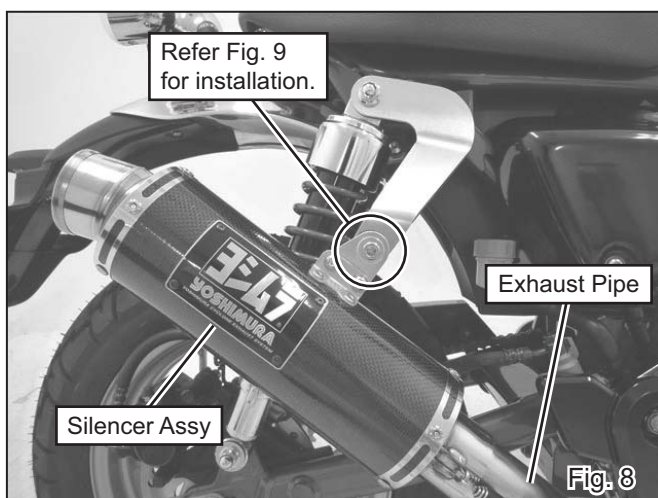


Fig. 8

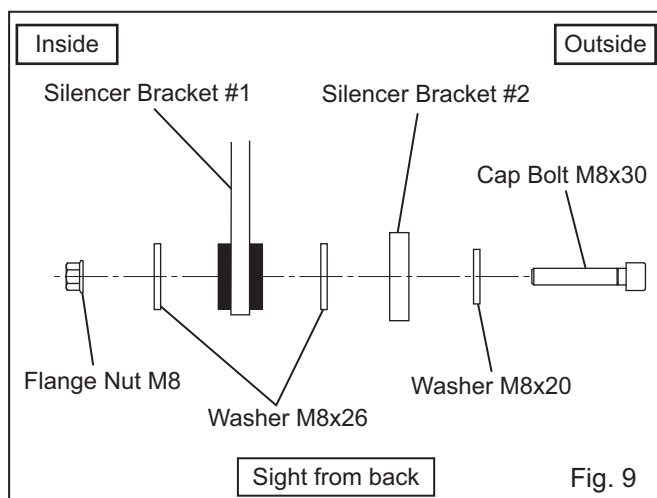


Fig. 9

- 8) Check that there are proper clearances between Yoshimura Exhaust System and other components, and adjust the position and angle of Silencer Assy. Then, tighten and torque Long Flange Nut M8, Button Bolt M6x20, Cap Bolt M8x30 and Thin U-Nut M10 P1.25 in order (See Fig. 10).

#### Tightening Torque

Long Flange Nut M8	: 15Nm
Button Bolt M6x20	: 10Nm
Cap Bolt M8x30	: 23Nm
Thin U-Nut M10 P1.25	: 28Nm

**CAUTION** Torque specification must be followed.

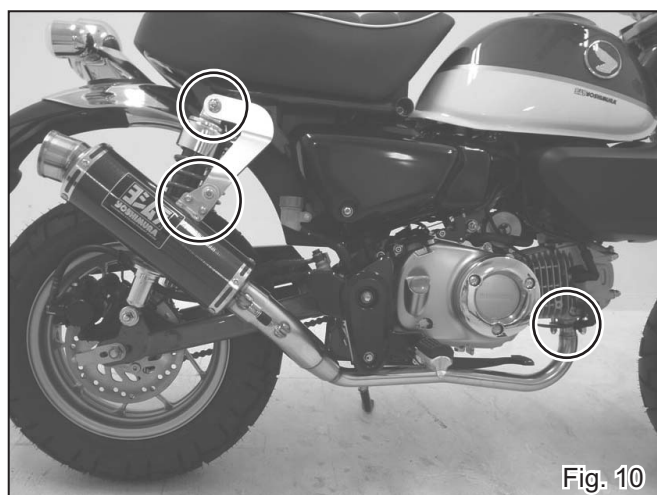


Fig. 10

9) Make sure there are proper clearances between Yoshimura exhaust system and other components. In case there is not enough clearance, loosen bolts and nuts then readjust the position of Yoshimura exhaust system.

10) It is recommended that whole exhaust to be wiped down with dish soap to remove oil and fingerprints. This will prevent from tarnishing of finish after exhaust system heats up.

**! CAUTION** When cleaning silencer, use soft cloth with dish soap. Do not use metal polish or parts cleaner. If neglected, Titanium Blue color may tarnish.

11) Warm-up engine, and inspect exhaust leaking. If "after fire" sounds severely, seal gaps of joint between pipes with heat resistant silicone gasket etc. Then, tighten all bolts and nuts further after engine cools down.

**! CAUTION** Before beginning the work, let motorcycle cool down.

**REFERENCE** It is normal for new silencer to smoke until inside oil residue burns off.

### **After Installation**



Side cover is not included in this set.

### **! CAUTION**

Titanium Blue sleeve is colored by anodizing. Handle with care as the color may change. When cleaning silencer, use soft cloth with dish soap but do not use metal polish or chemical cleaner.

### **! CAUTION**

This exhaust is produced for track-day use or for areas where it is not necessary to use a fully legal exhaust. If it is used for racing or on a chassis dynamometer, any damage or carbon discoloration is not included in warranty.

### **REFERENCE**

Yoshimura Japan recommends silencer inner wool replacement every 5,000km (3,000miles) in order to get Yoshimura exhaust performance fully. Climate, riding condition, and frequency of ride are direct contributing factors for inner wool worn out. Keeping high engine revolution also promotes further wool consumption. For silencer repairing, please contact local Yoshimura distributor for further information.

### **- CAUTIONS AFTER INSTALLATION -**

- ⊙ Check each bolt sometimes to see that there is no failure condition such as poor tightening.
- ⊙ Quality control is implemented on all products. If, however, any defect or failure is found, please notify Yoshimura Japan through the selling dealer. Necessary technical service or replacing of the product will be made.
- ⊙ Due to improvement, the specifications and price of the product are subject to change without notice.
- ⊙ For any information regarding this product, please address inquiries to Yoshimura Japan Co., Ltd.

Yoshimura Japan Co., Ltd.

6748 Nakatsu, Aikawa, Aiko, Kanagawa 243-0303 Japan

Web site: <http://www.yoshimura-jp.com> E-Mail: [yj-world@yoshimura-jp.com](mailto:yj-world@yoshimura-jp.com)