

KAWASAKI NINJA250 / NINJA400 / Z250 / Z400 STREET SPORTS SLIP-ON R-11 SINGLE EXIT

Be sure to read the instruction carefully before starting the work. It is necessary to follow the contents to install Yoshimura product.

Product information



- CAUTION** Before beginning installation, let motorcycle cool down.
- CAUTION** Be sure not to damage each part during installation.
- CAUTION** Torque specification must be followed. If neglected, it may cause bolt and nut to fall off and damage to Yoshimura product and motorcycle.
- CAUTION** Metal Magic sleeve is coated with heat-resistant paint. Handle with care not to be hit or scratched by surroundings as the coating may come off. When cleaning silencer, use soft cloth with dish soap but do not use metal polish or chemical cleaner.
- CAUTION** Titanium Blue sleeve is colored by anodizing. Handle with care as the color may change. When cleaning silencer, use soft cloth with dish soap but do not use metal polish or chemical cleaner.

1. Product Information :

Description	KAWASAKI NINJA250 / NINJA400 / Z250 / Z400 Street Sports Slip-On R-11 Single Exit		
Part Number	Metal Magic Sleeve (SM) : 180-235-5E20	Cyclone Type	K235S11C1
	Satin Finish Sleeve (SSF) : 180-235-5E30	Main Material	Stainless steel
	Titanium Blue Sleeve (STB) : 180-235-5E80B	Weight [STD : 3.7kg(250) / 4.1kg(400)]	(SM) & (SSF) : 2.3kg
			(STB) : 2.1kg

2. Applicable Model :

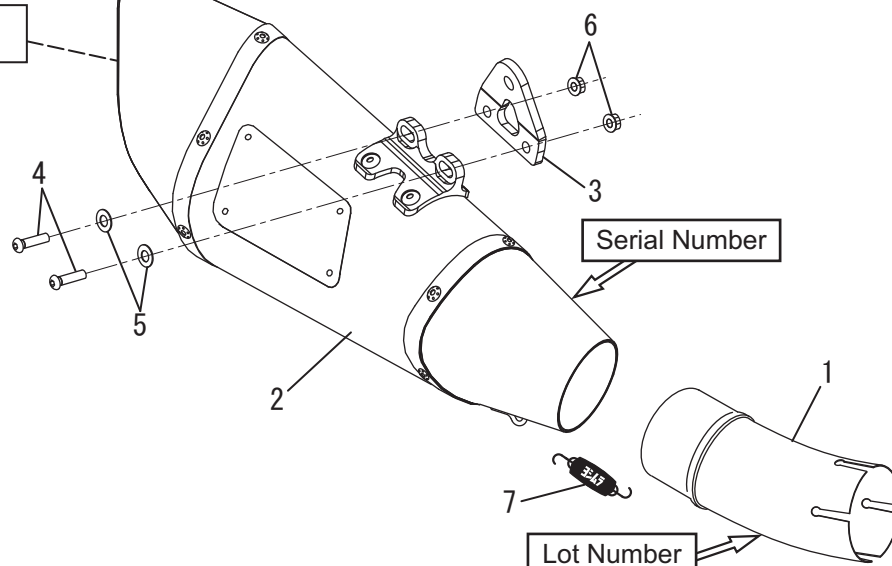
Model	KAWASAKI NINJA250(2018-2023) / NINJA400(2018-2023) / Z250(2019-2023) / Z400(2019-2023)
-------	--

3. Contents:

No.	Descriptions	Part No.	Q'ty	No.	Descriptions	Part No.	Q'ty
1	Tailpipe	115-235-5E00	1	4	Button Bolt M6x20	803-206-4020	2
2	Silencer Assy Metal Magic Sleeve	186-235-5E20	1	5	Washer M6x13	812-206-1310	2
	Silencer Assy Satin Finish Sleeve	186-235-5E30		6	Flange Nut M6	823-006-1000	2
	Silencer Assy Titanium Blue Sleeve	186-235-5E80B		7	Exhaust Spring	118-001-2000	1
3	Silencer Bracket	161-235-0210	1				

Parts Diagram

SD#107 (Pre-installed)
Parts No. : 138-138-22A7



4. Installation steps:

- 1) Check that all the component parts are in hand.
- 2) According to KAWASAKI service manual, remove stock silencer assembly (See Fig. 1).

CAUTION When removing silencer assembly, be careful not to damage frame or other components.

REFERENCE Stock nut, washer and bolt removed at this stage are reused when mounting Yoshimura product.



Fig. 1

- 3) Remove stock clamp band from stock silencer assembly removed at Step 2) (See Fig. 2).

REFERENCE Stock clamp band removed at this stage is reused when mounting Yoshimura slip-on.

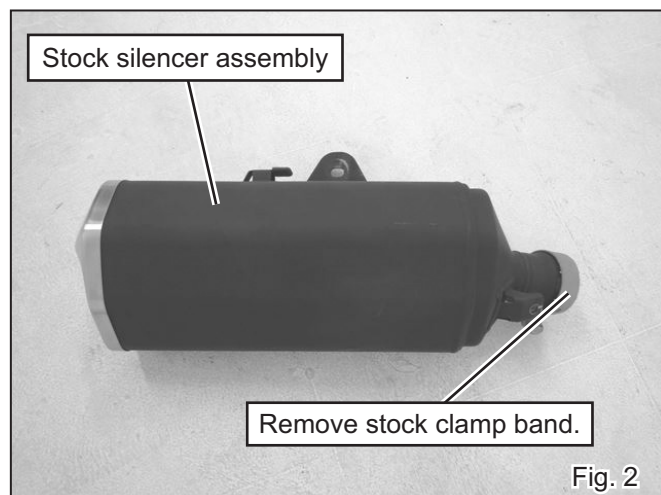


Fig. 2

- 4) Insert KAWASAKI genuine gasket into front of Tailpipe and install stock clamp band removed at Step 3) (See Fig. 3).

CAUTION Use KAWASAKI genuine new exhaust gasket.

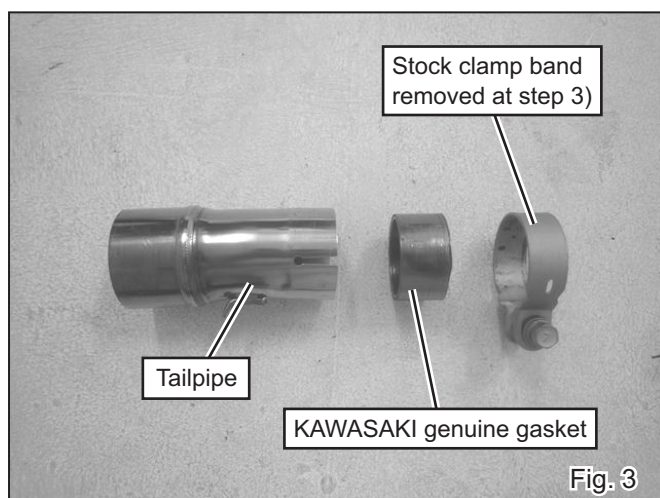


Fig. 3

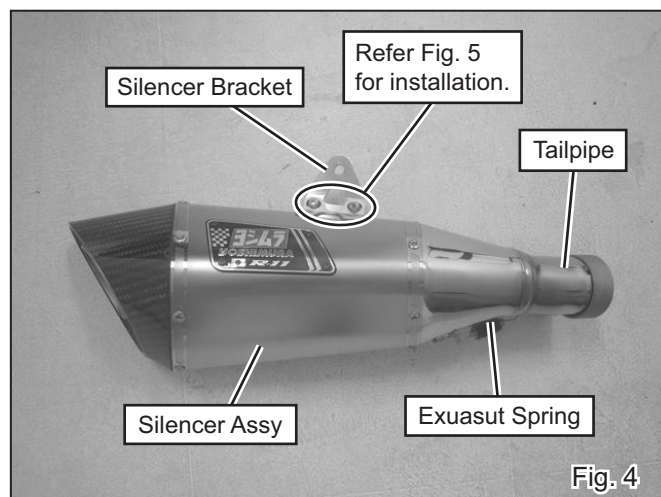


Fig. 4

- 5) Install Silencer Assy to Tailpipe and fix them with Exhaust Spring (See Fig. 4).

CAUTION Make sure that exhaust spring is hooked to spring installation tool firmly. If neglected, it may cause injury.

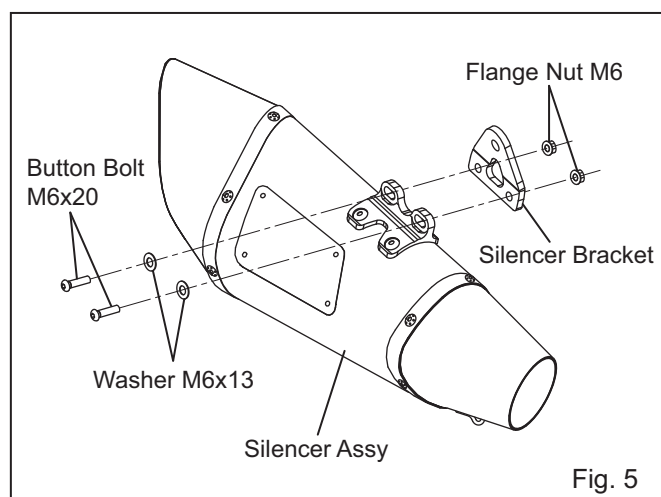
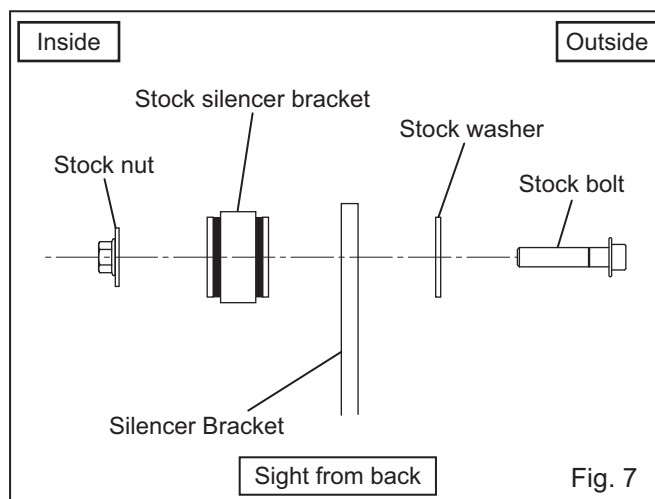
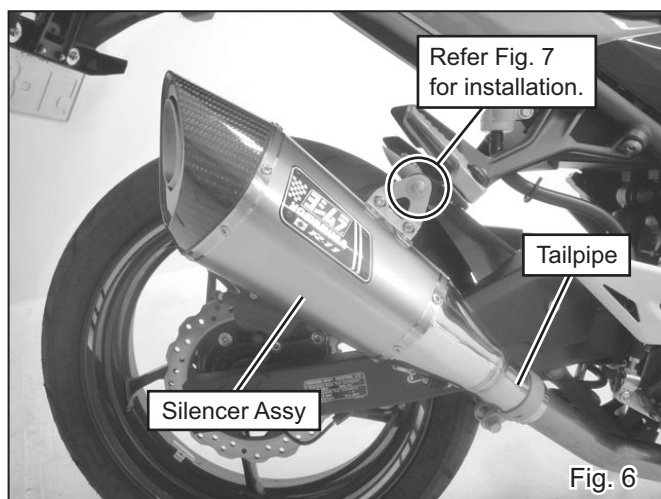


Fig. 5

- 6) Attach Silencer Bracket onto Silencer Assy with 2 of each Button Bolt M6x20, Washer M6x13 and Flange Nut M6 (See Fig. 4 & 5). Tighten the bolts by hand only at this stage.



7) Install Silencer Assy and Tailpipe (assembled at Step. 5 & 6) to stock tailpipe (See Fig. 6). Tighten the bolt on stock clamp band by hand only at this stage.

8) Mount Silencer Bracket to stock silencer bracket with stock bolt, washer and nut (See Fig. 6 & 7). Tighten the bolt by hand only at this stage.



9) Check that there are proper clearances between Yoshimura slip-on and other components. Then, tighten and torque stock clamp band, Button Bolt M6x20 and stock bolt on Silencer Bracket in order (See Fig. 8 & 9).

Tightening Torque	Stock clamp band	: 15Nm
	Button Bolt M6x20	: 10Nm
	Stock bolt	: 23Nm

CAUTION Torque specification must be followed.



10) It is recommended that whole Yoshimura slip-on to be wiped down with dish soap to remove oil and fingerprints. This will prevent tarnishing of finish after the slip-on is heated up.

CAUTION When cleaning silencer, use soft cloth with dish soap. Do not use metal polish or parts cleaner. If neglect, the paint of Emblem and Metal Magic finish may come off or Titanium Blue color may tarnish.

11) Warm-up engine, and inspect the exhaust leakage. Tighten all bolts and nuts further after engine is cooled down.

- 12) If "after fire" sounds severely, seal the gaps between Tailpipe and Silencer Assy with silicone gasket etc. Sealing gaps further after engine is cooled down.



⚠ CAUTION

Titanium Blue sleeve is colored by anodizing. Handle with care as the color may change. When cleaning silencer, use soft cloth with dish soap but do not use metal polish or chemical cleaner.

⚠ CAUTION

This exhaust is produced for street use only. In case that it is used on race circuit or tested on chassis dynamometer, any damage or carbon discoloration is not included in warranty.

REFERENCE

Yoshimura Japan recommends silencer inner wool replacement every 5,000km (3,000miles) in order to get Yoshimura exhaust performance fully. Climate, riding condition, and frequency of ride are direct contributing factors for inner wool worn out. Keeping high engine revolution also promotes further wool consumption. For silencer repairing, please contact local Yoshimura distributor for further information.

- CAUTIONS AFTER INSTALLATION -

- ⊙ Check each bolt sometimes to see that there is no failure condition such as poor tightening.
- ⊙ Quality control is implemented on all products. If, however, any defect or failure is found, please notify Yoshimura Japan through the selling dealer. Necessary technical service or replacing of the product will be made.
- ⊙ Due to improvement, the specifications and price of the product are subject to change without notice.
- ⊙ For any information regarding this product, please address inquiries to Yoshimura Japan Co., Ltd.

Yoshimura Japan Co., Ltd.

6748 Nakatsu, Aikawa, Aiko, Kanagawa 243-0303 Japan

Web site: <http://www.yoshimura-jp.com> E-Mail: yj-world@yoshimura-jp.com