

## SUZUKI V-STROM1000 ABS / V-STROM1050 / XT EEC SLIP-ON HEPTA FORCE

Product information



Be sure to read the instruction carefully before starting the work. It is necessary to follow the contents to install Yoshimura product.

- CAUTION** Before beginning installation, let motorcycle cool down.
- CAUTION** Be sure not to damage each part during installation.
- CAUTION** Torque specification must be followed. If neglected, it may cause bolt and nut to fall off and damage to Yoshimura product and motorcycle.
- CAUTION** Metal Magic sleeve is coated with heat-resistant paint. Handle with care not to be hit or scratched by surroundings as the coating may come off. When cleaning silencer, use soft cloth with dish soap but do not use metal polish or chemical cleaner.
- CAUTION** Titanium Blue sleeve is colored by anodizing. Handle with care as the color may change. When cleaning silencer, use soft cloth with dish soap but do not use metal polish or chemical cleaner.

### 1. Product Information :

Description	SUZUKI V-STROM1000 ABS EEC Slip-On Hepta Force SUZUKI V-STROM1050 / XT EEC Slip-On Hepta Force	EEC Approval No.	Euro4 : e3 10002G (V-STROM1000 ABS) Euro5 : e1 00075G (V-STROM1050 / XT)
Part Number	Satin Finish Sleeve (SSFC) : 1F0-195-L03G1	Main Material	Stainless steel
	Metal Magic Sleeve (SMC) : 1F0-195-L02G1	Weight	(SSFC) & (SMC) : 4.1kg
	Titanium Blue Sleeve (STBC) : 1F0-195-L06G1	[STD : 5.4kg]	(STBC) : 3.9kg
Cyclone Type	S195SHFC1		

### 2. Applicable Model :

Model	SUZUKI V-STROM1000 ABS (17-19) / V-STROM1050 / XT (20)
-------	--

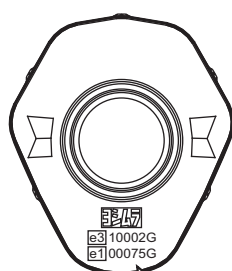
### 3. Contents :

No.	Descriptions	Part No.	Q'ty	No.	Descriptions	Part No.	Q'ty
1	Tailpipe	1F5-195-L000	1	6	Cap Bolt M8x20	800-208-5020	2
2	Silencer Assy Satin Finish Sleeve	1F6-195-L03G1	1	7	Cap Bolt M8x50	800-208-5050	1
	Silencer Assy Metal Magic Sleeve	1F6-195-L02G1		8	Washer M8x26	812-108-2600	5
	Silencer Assy Titanium Blue Sleeve	1F6-195-L06G1		9	Flange Nut M8	823-008-1250	2
3	Silencer Bracket	161-195-0200	1	10	Exhaust Spring	118-001-0000	2
4	Silencer Band	162-50R-J500	2	11	Spacer 8-30-5	850-008-3005	1
5	Silencer Band Rubber	896-016-0835	2				

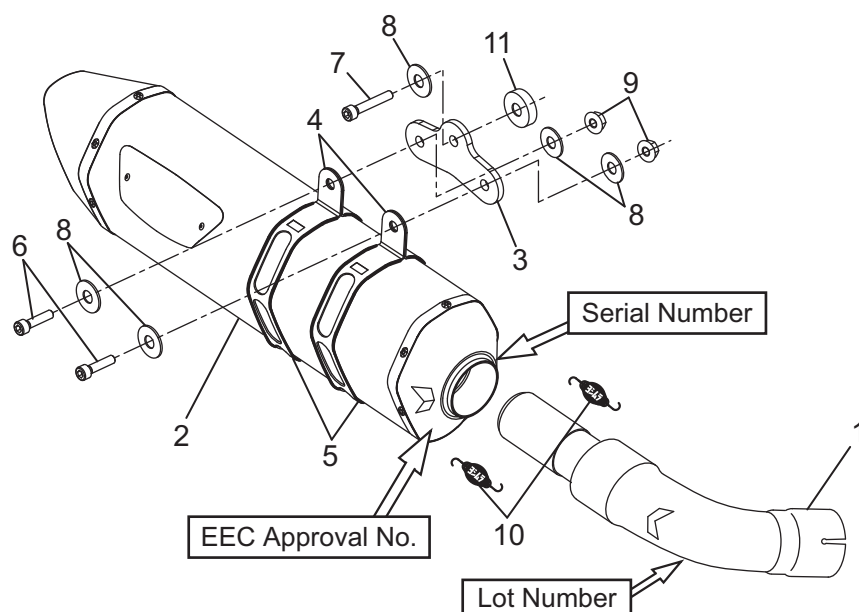
### Parts Diagram

NOTE:SD#113E 138-138-38B3-E4 is welded.

Sight From Front



EEC Approval No.



Serial Number

EEC Approval No.

Lot Number

## 4. Installation steps:

- 1) Check that all the component parts are in hand.
- 2) According to Suzuki service manual, remove stock silencer assembly from vehicle (See Fig. 1).

**CAUTION** When removing silencer assembly, be careful not to damage frame or other components.

**REFERENCE** Stock nut removed at this stage is reused when mounting Yoshimura slip-on.

- 3) Remove stock clamp band from stock silencer assembly.

**REFERENCE** Clamp band is used for installation of Yoshimura slip-on.

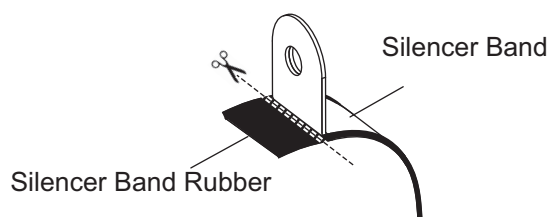
- 4) Insert exhaust gasket into front end of Tailpipe. And, mount clamp band removed at step 3) on the front end (See Fig. 2).

**CAUTION** Use new Suzuki genuine exhaust gasket.

- 5) Place 2 of Silencer Band Rubber inside each Silencer Band and slide them on Silencer Assy as the front one is positioned as shown on Fig. 3. Mount Silencer Bracket with 2 of Cap Bolt M8x20, 4 of Washer M8x26, and 2 of Flange Nut M8 (See Fig. 3 & 4). Tighten the bolts by hand only at this stage.

**REFERENCE** Do not firmly tighten the Silencer Bands at this step for adjusting their position at later step.

**REFERENCE** Cut excess of Silencer Band Rubber with scissors etc. when placing it inside Silencer Band.



**CAUTION** Silencer Band is asymmetric shape. Be sure to place them in correct direction as shown on Fig. 4 & 7. If neglected, it may cause damage on Yoshimura slip-on or/and vehicle.

**CAUTION** Be sure to place Silencer Band at right angles to Silencer Assy. If neglected, it may cause breakage to Silencer Band.

**CAUTION** Before hand-tighten Silencer Band, make sure silencer sleeve and Silencer Band fit evenly without any opening between them. If neglected, it may cause deformation of silencer sleeve.



Fig. 1

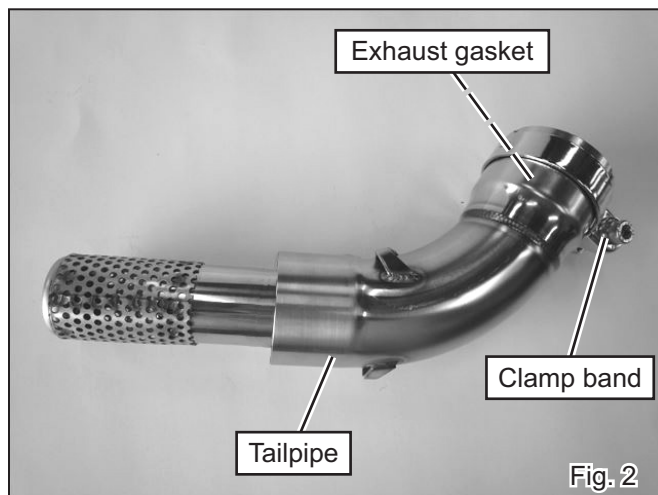


Fig. 2

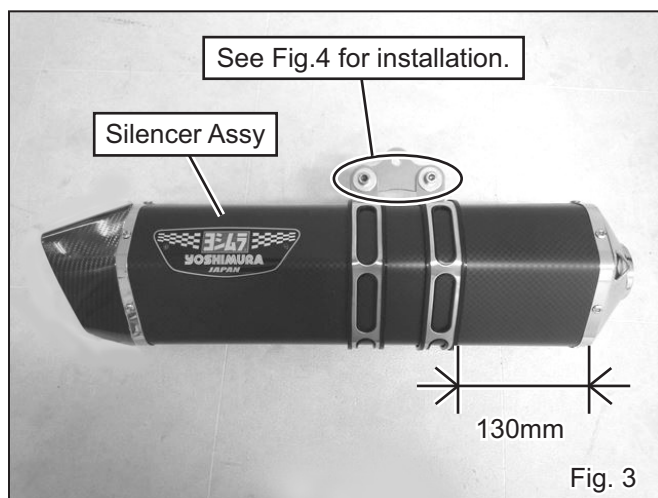


Fig. 3

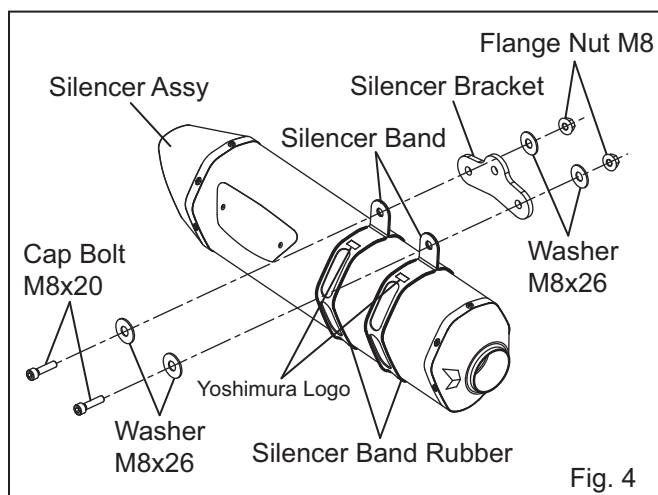
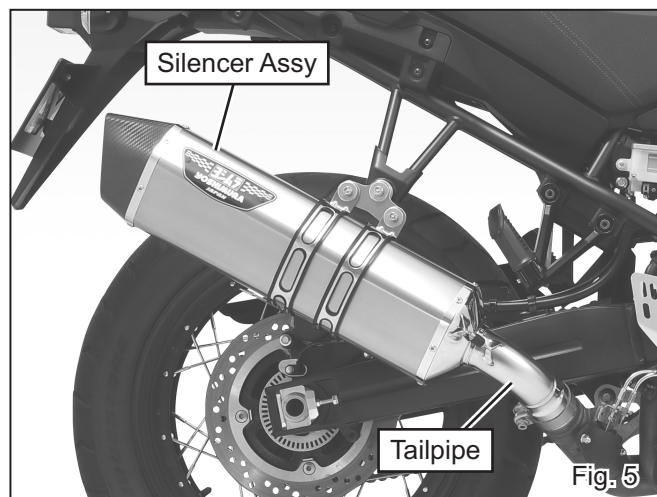
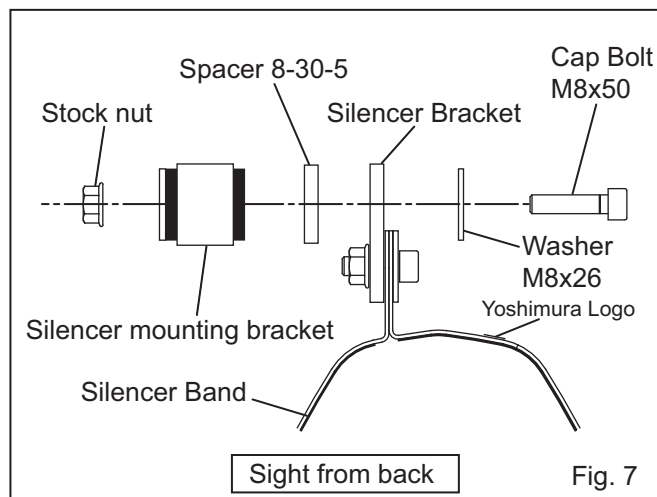
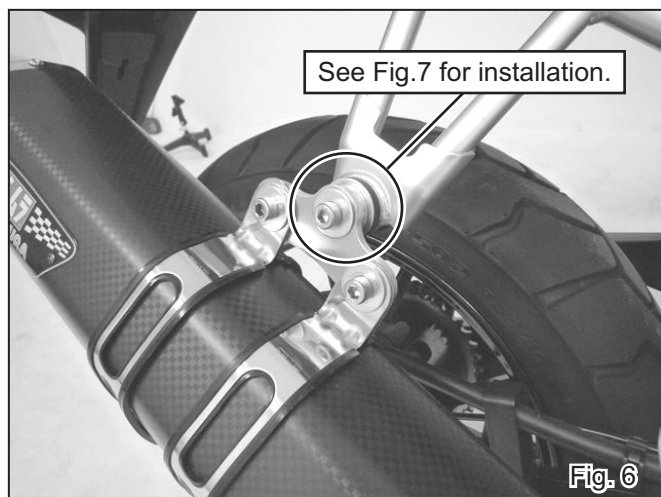


Fig. 4

- 6) Install Tailpipe in Silencer Assy and mount them on vehicle. Adjust angle of Silencer Assy and position of Silencer Bands to fit hole of Silencer Bracket at stock silencer bracket (See Fig. 5).

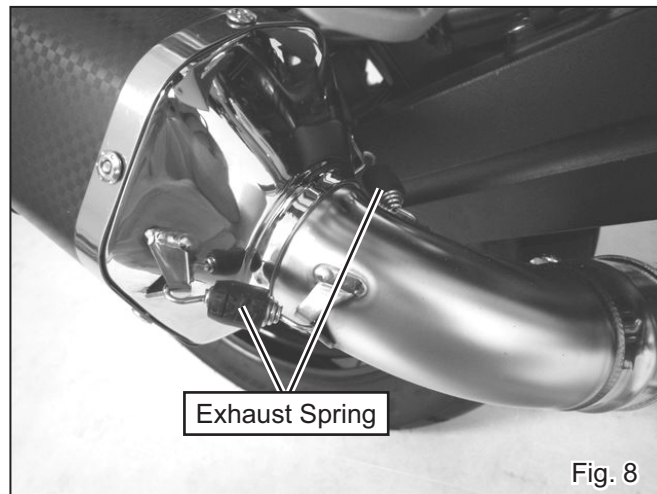


- 7) Fix Silencer Bracket at stock silencer bracket with Cap Bolt M8x50, Washer M8x26, Spacer 8-30-5 and stock nut. Tighten the bolt by hand only at this stage (See Fig. 6 & 7).



- 8) Fix Tailpipe and Silencer Assy with 2 of Exhaust Spring (See Fig. 8).

**CAUTION** Make sure that exhaust spring is hooked to installing tool firmly. If neglected, it may cause injury.



- 9) Check that there are proper clearances between Yoshimura slip-on and other components, and adjust the position and angle of Silencer Assy. Then, tighten and torque bolts on clamp band, 2 of Cap Bolt M8x20 and Cap Bolt M8x50 in the order (See Fig. 9).

<b>Tightening Torque</b>	Clamp Band	: 10Nm
	Cap Bolt M8x20	: 23Nm
	Cap Bolt M8x50	: 23Nm

**CAUTION** Torque specification must be followed.





- 10) Check that there are proper clearances between Yoshimura slip-on and other components. In case there is not enough clearance, loosen bolts and readjust the position of Yoshimura slip-on.
- 11) It is recommended that whole Yoshimura slip-on is wiped down with dish soap to remove oil and fingerprints. This will prevent tarnishing of finish after the slip-on is heated up.

**! CAUTION** When cleaning silencer, use soft cloth with dish soap. Do not use metal polish or part cleaner. If neglected, the paint of Emblem and Metal Magic finish may come off or Titanium Blue color may tarnish.

- 12) Warm-up engine, and inspect the exhaust leakage. If "after fire" sounds severely, seal the gaps of joint with silicone gasket etc.
- 13) Tighten all bolts further after engine is cooled down. If any problem is found, please follow through instruction steps carefully again.

After Installation : V-STROM1000 ABS



After Installation : V-STROM1050 / XT



**! CAUTION**

Titanium Blue sleeve is colored by anodizing. Handle with care as the color may change. When cleaning silencer, use soft cloth with dish soap but do not use metal polish or chemical cleaner.

**! CAUTION**

This exhaust is produced for street use only. In case that it is used on race circuit or tested on chassis dynamometer, any damage or carbon discoloration is not included in warranty.

**REFERENCE**

Yoshimura Japan recommends silencer inner wool replacement every 5,000km (3,000miles) in order to get Yoshimura exhaust performance fully. Climate, riding condition, and frequency of ride are direct contributing factors for inner wool worn out. Keeping high engine revolution also promotes further wool consumption. For silencer repairing, please contact local Yoshimura distributor for further information.

**- CAUTIONS AFTER INSTALLATION -**

- ⊙ Check each bolt sometimes to see that there is no failure condition such as poor tightening.
- ⊙ Quality control is implemented on all products. If, however, any defect or failure is found, please notify Yoshimura Japan through the selling dealer. Necessary technical service or replacing of the product will be made.
- ⊙ Due to improvement, the specifications and price of the product are subject to change without notice.
- ⊙ For any information regarding this product, please address inquiries to Yoshimura Japan Co., Ltd.

Yoshimura Japan Co., Ltd.

6748 Nakatsu, Aikawa, Aiko, Kanagawa 243-0303 Japan

Web site: <http://www.yoshimura-jp.com> E-Mail: [yj-world@yoshimura-jp.com](mailto:yj-world@yoshimura-jp.com)