

SUZUKI GSX-S1000/F / KATANA OPTION EXHAUST PIPE

Be sure to read the instruction carefully before starting the work. It is necessary to follow the contents to install Yoshimura product.

Product information



- CAUTION** Before beginning installation, let motorcycle cool down.
- CAUTION** Be sure not to damage each part during installation.
- CAUTION** Torque specification must be followed. If neglected, it may cause bolt and nut to fall off and damage to Yoshimura product and motorcycle.
- CAUTION** Installation of this product is required rear suspension removal. Follow the procedures in Genuine service manual for the suspension removal and installation.

1. Product Information :

Description	SUZUKI GSX-S1000/F / KATANA OPTION EXHAUST PIPE	Cyclone Type	S196S11C2
Part Number	:143-196-5F00	Main Material	Stainless steel
		Weight [STD : 8.0kg]	4.2kg

2. Applicable Model :

Applicable Model	SUZUKI GSX-S1000/F / KATANA		
	Yoshimura EEC Slip-On R-11 Single Exit only		
Application	<SUZUKI GSX-S1000/F EEC Slip-On R-11> Part number : 1A0-196-5E**		<SUZUKI KATANA EEC Slip-On R-11 Euro4> Part number : 1F0-199-5E**
	 <SUZUKI GSX-S1000/F EEC Slip-On R-11 Euro4> Part number : 1F0-196-5E**		

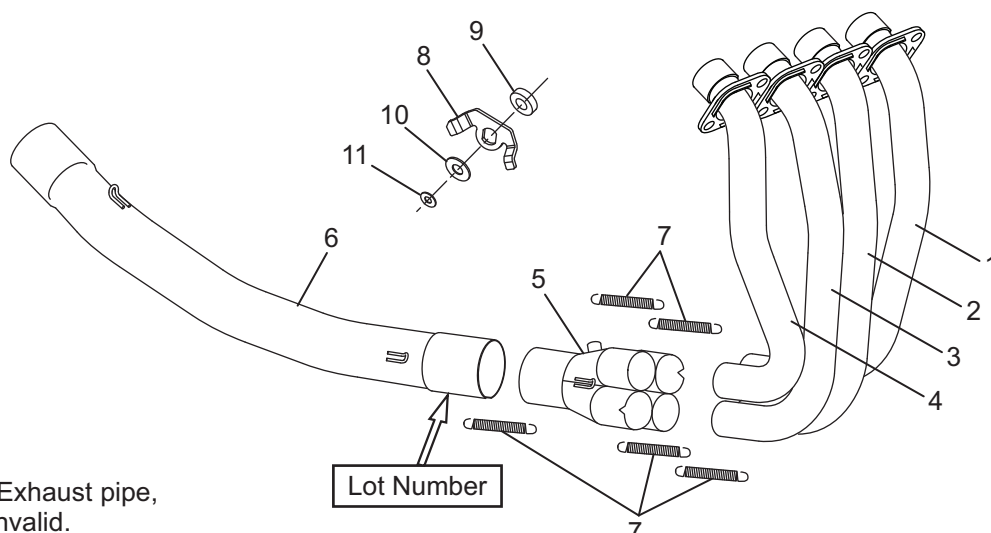
3. Contents:

No.	Descriptions	Part No.	Q'ty	No.	Descriptions	Part No.	Q'ty
1	Exhaust Pipe #1	181-196-5F00	1	7	Exhaust Spring (Long)	118-000-1000	5
2	Exhaust Pipe #2	182-196-5F00	1	8	Exhaust Control Valve Canceller Bracket	148-984-0021	1
3	Exhaust Pipe #3	183-196-5F00	1	9	Aluminum Spacer 12-20-7	860-012-2007	1
4	Exhaust Pipe #4	184-196-5F00	1	10	Washer M12	812-512-1815	1
5	Exhaust Collector	119-196-5000	1	11	Washer M5	812-205-1512	1
6	Tailpipe	185-196-5F00	1	*	Spring Inner Tube	118-000-1100	5

4. Optional Part :

Description	Part No.
SILENCER BRACKET SET for GSX-S1000/F	194-196-0010

Parts Diagram



CAUTION

In combination with this Option Exhaust pipe, the EEC Approval of Slip-on is invalid.

5. Installation steps:

- 1) Check all the component parts are in hand.
- 2) According to Genuine service manual, disconnect O2 sensor coupler from vehicle and then remove whole exhaust system and Yoshimura slip-on from vehicle after tacking O2 sensor and exhaust valve wires off from stock exhaust system. (See Fig. 1)

REFERENCE It is require to remove under fairing (GSX-S1000) or side fairing (GSX-S1000F).



Fig. 1

- 3) Insert Spring Inner Tube into Exhaust Spring (Long). (See Fig. 2)

REFERENCE It is normal that Spring Inner Tube is longer than Exhaust Spring. Inner Tube is hidden when Exhaust Spring is pulled.

REFERENCE Spring Inner Tube is easily inserted by rotating.

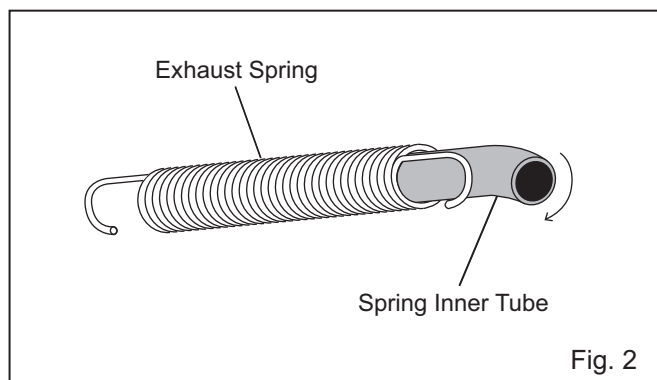


Fig. 2

- 4) According to Genuine service manual, remove seat, rear seat ang seat fairing. Then remove rear suspension.

CAUTION Make sure to hold the vehicle with jackup device or maintenance stand.

- 5) Disconnect exhaust valve coupler and then remove exhaust valve motor. (See Fig. 3)

- 6) Unscrew stock bolt from motor pulley on exhaust valve motor with caution not to turn the pulley. Then remove pulley from exhaust valve motor. (See Fig.4)

CAUTION Make sure not to turn motor pulley while the bolt is unscrewed. If neglected, it may cause serious damage to exhaust valve motor.

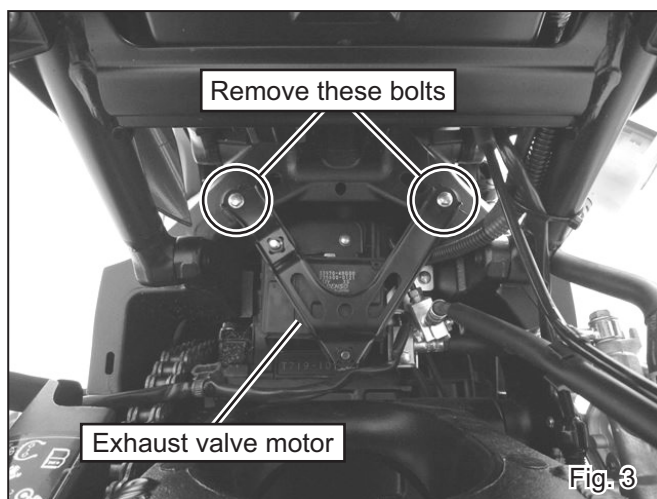


Fig. 3

- 7) Mount Exhaust Control Valve Cancellor Bracket on exhaust valve motor with Aluminum Spacer 12-20-7, Washer M12, Washer M5 and stock bolt removed from motor pulley at step 6) (See Fig. 5 & 6 on next page). Tighten and torque the bolt.

Tightening Torque Stock bolt : 5Nm

CAUTION Torque specification must be followed.

CAUTION Make sure not to turn bracket while the bolt is screwed. If neglected, it may cause serious damage to exhaust valve motor.

CAUTION Make sure to mount Exhaust Control Valve Cancellor Bracket in right direction.

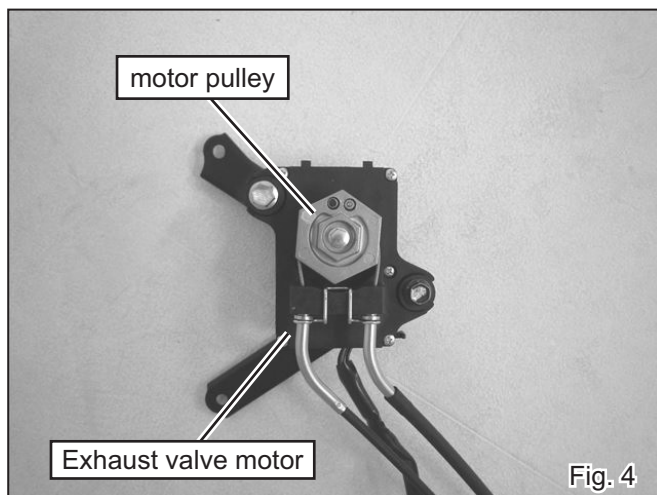


Fig. 4

- 8) According to Genuine service manual, reinstall exhaust valve motor, rear suspension, seat fairing, rear seat and seat to original position.

Photo is reference only and exhaust valve motor is differ from this model.

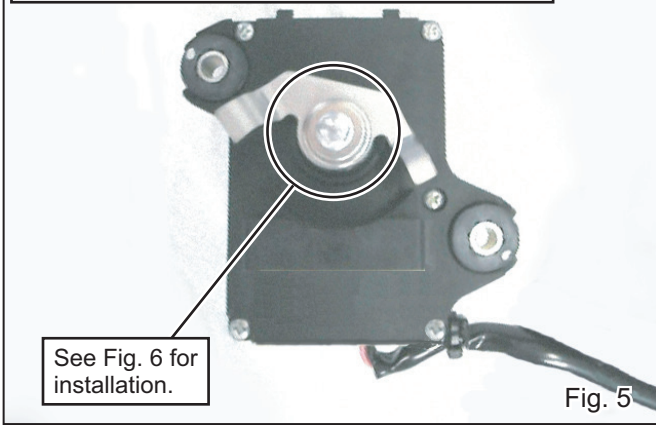


Fig. 5

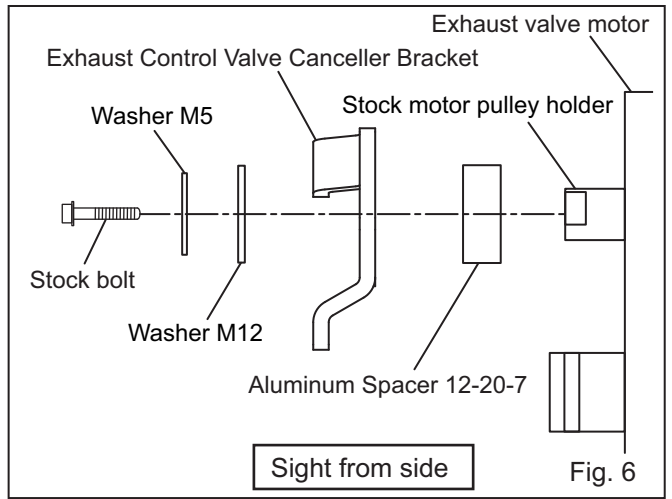


Fig. 6

- 9) Remove grommet rubber and grommet spacer from stock silencer mounting bracket. (See Fig. 7)
- 10) Check sticker numbers on Exhaust Collector and install 4 of Exhaust Pipe in the right place from #4 >> #3 >> #1 >> #2 in order. Then, fir chips on Exhaust Pipe #1 and #3 to recesses on Exhaust Collector, adjust the position of Exhaust Pipe #1 and #4 to engine wide and install 4 of Exhaust Spring (Long) (See Fig. 8).

CAUTION Make sure that Exhaust Spring is hooked to spring installation tool firmly. If neglected, it may cause injury.

- 11) Peel stickers on Exhaust Collector and wipe down grease completely.

CAUTION Please make sure to remove stickers and remove grease during the installation. This will help prevent tarnishing of finish after exhaust system is heated up.

- 12) Replace exhaust gaskets on all the exhaust ports with new ones and mount Exhaust Pipes assembly which is completed at Step 10 to exhaust ports and fix it with 8 of stock bolt. Tighten bolts by hand only at this stage. (See Fig. 9 & 10)

CAUTION Be careful not to damage radiator/oil cooler cores when mounting header assy.

REFERENCE Use new Suzuki genuine exhaust gaskets.

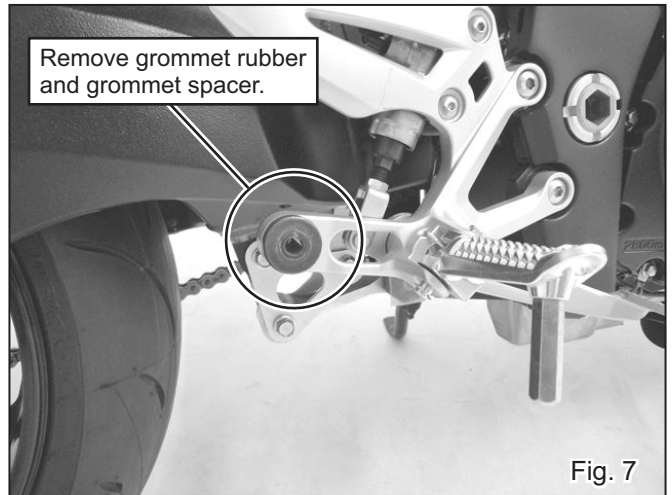


Fig. 7

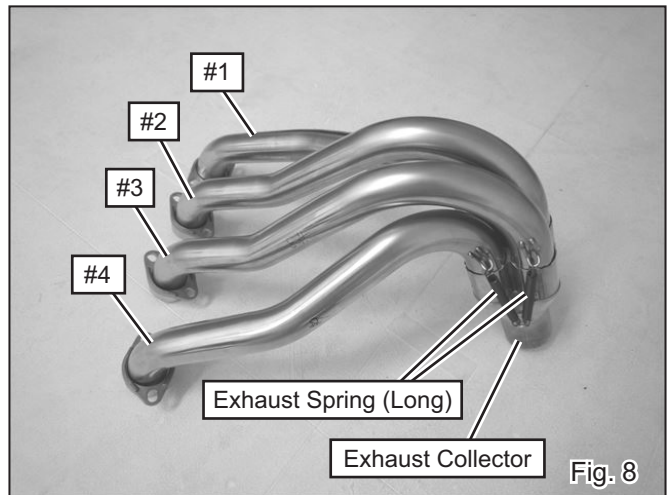


Fig. 8



Fig. 9

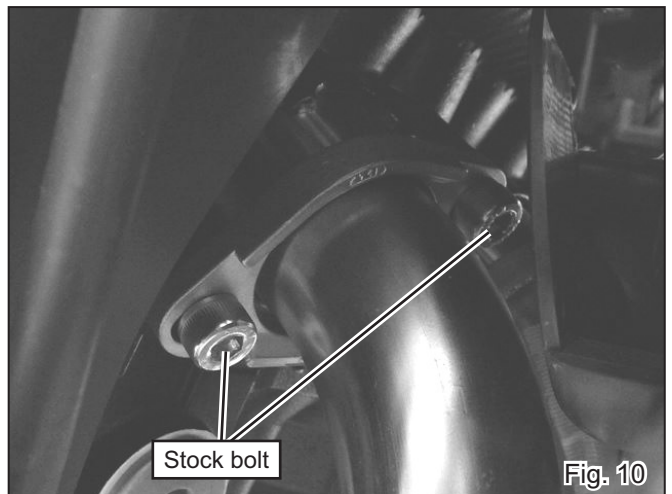


Fig. 10

- 13) Insert Tailpipe to Exhaust Collector and install Exhaust Spring (Long). (See Fig. 11)

CAUTION Make sure that Exhaust Spring is hooked to spring installation tool firmly. If neglected, it may cause injury.

- 14) Mount Silencer Assembly from Yoshimura R-11 Slip-on set on Tailpipe and install 2 of Exhaust Spring. (See Fig. 12)

CAUTION Make sure that Exhaust Spring is hooked to spring installation tool firmly. If neglected, it may cause injury.

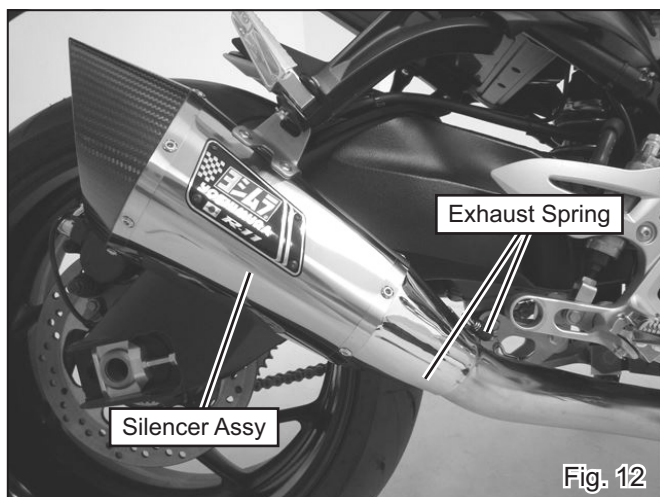


Fig. 12

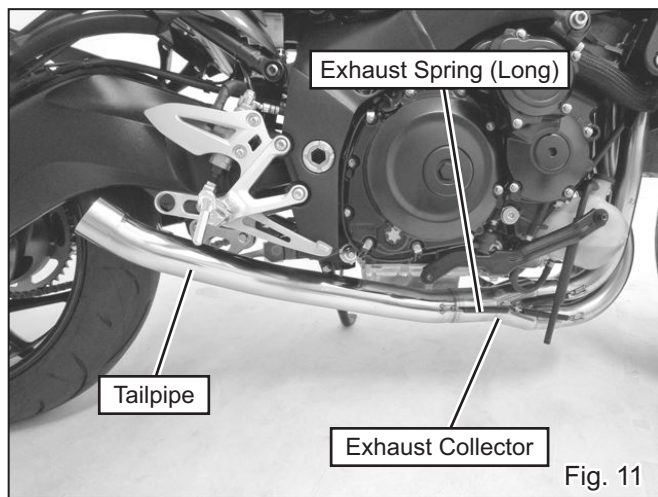


Fig. 11

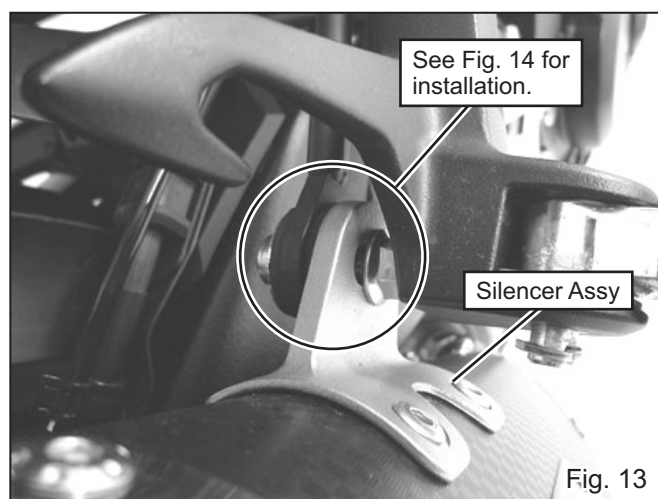


Fig. 13

- 15) Fix Silencer Assy to Silencer Bracket with Cap Bolt M8x30, 2 of Washer M8x26 and Flange Nut M8 supplied in the Yoshimura R-11 Slip-on set. (See Fig. 13 & 14) Tighten bolt by hand only at this stage.

- 16) Check that there are proper clearances between Yoshimura exhaust system and other components. Then, tighten and torque bolts at exhaust port and Silencer in order. (See Fig 15 & 16)

Tightening Torque

Stock bolt at exhaust port : 15Nm
Cap Bolt M8x30 at Silencer : 23Nm

CAUTION Torque specification must be followed.

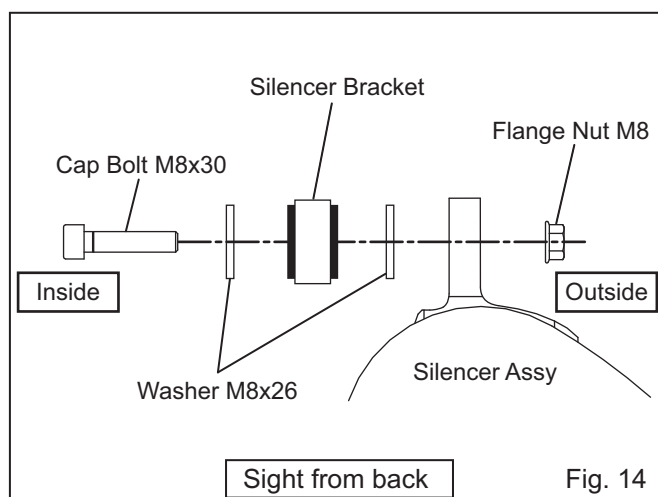


Fig. 14

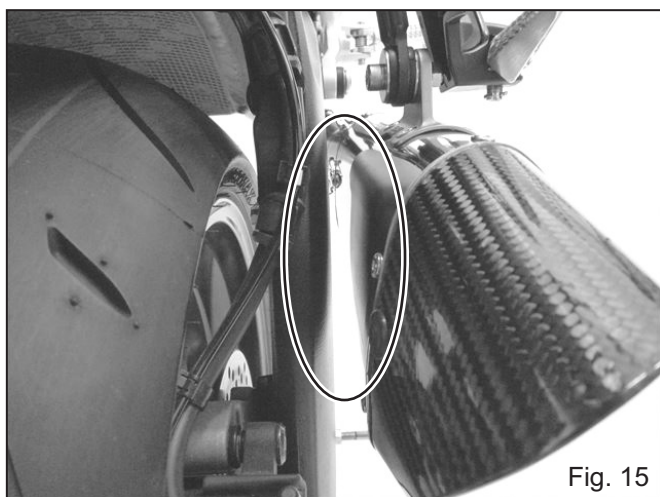


Fig. 15

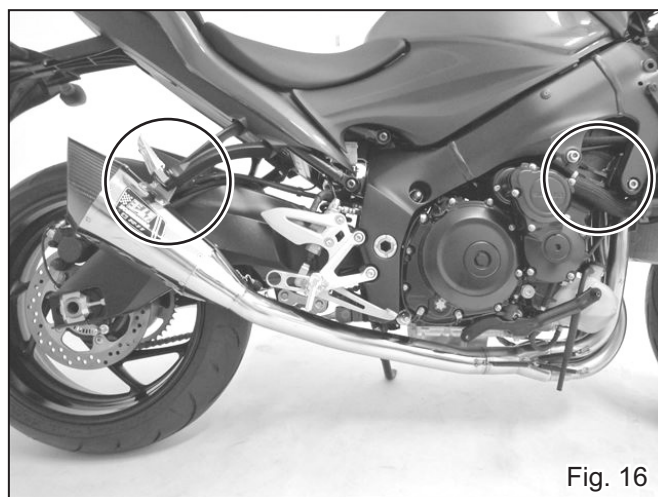


Fig. 16

- 17) Install O2 sensor which was removed at Step 2 on Exhaust Collector, tighten with the specified torque and connector the O2 sensor coupler to the vehicle.

Tightening Torque O2 sensor : 25Nm

CAUTION Torque specification must be followed.

- 18) It is recommended that whole Yoshimura exhaust system is wiped down with dish soap to remove oil and fingerprints. This will prevent tarnishing of finish after the exhaust system is heated up.

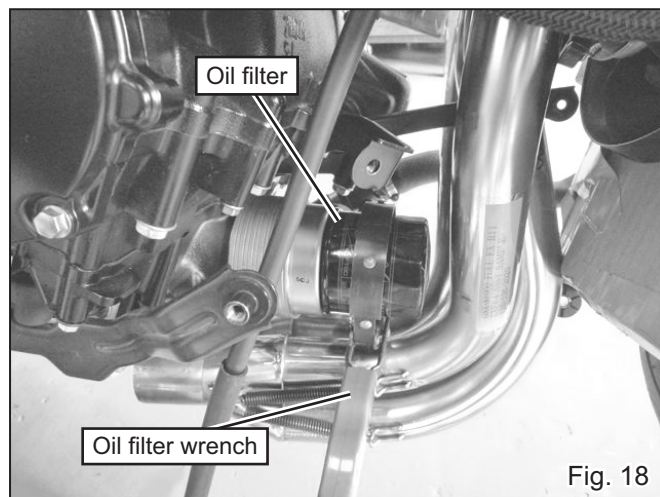
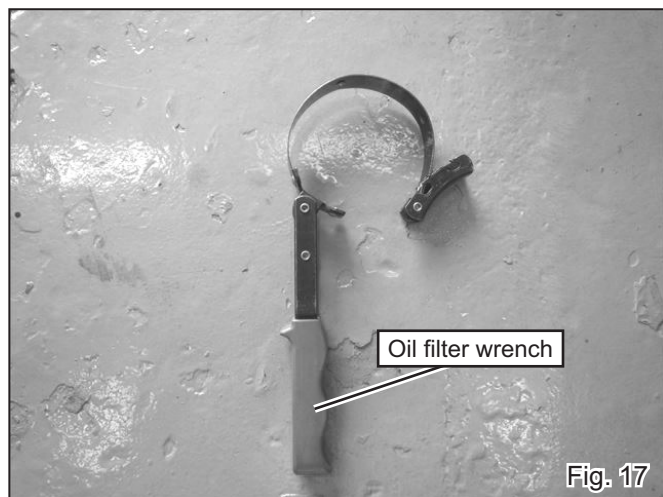
CAUTION When cleaning Silencer Assembly, use soft cloth with dish soap. Do not use metal polish or parts cleaner. If neglected, the paint of Emblem may come off or Titanium Blue color may tarnish.

- 19) Warm-up engine, and inspect the exhaust leakage. If exhaust leakage is found, seal the gaps of joint with silicone gasket etc. Tighten all bolts further after engine is cooled down. If any problem is found, please follow through instruction steps carefully again.

REFERENCE It is normal for new silencer to smoke until inside oil residue burns off.

- 20) Reinstall fairing.

REFERENCE When replacing oil filter, use oil filter wrench like the sample shown on Fig. 17. (See Fig. 18)



- CAUTIONS AFTER INSTALLATION -

- ⊙ Check each bolt sometimes to see that there is no failure condition such as poor tightening.
- ⊙ Quality control is implemented on all products. If, however, any defect or failure is found, please notify Yoshimura Japan through the selling dealer. Necessary technical service or replacing of the product will be made.
- ⊙ Due to improvement, the specifications and price of the product are subject to change without notice.
- ⊙ For any information regarding this product, please address inquiries to Yoshimura Japan Co., Ltd.

Yoshimura Japan Co., Ltd.

6748 Nakatsu, Aikawa, Aiko, Kanagawa 243-0303 Japan

Web site: <http://www.yoshimura-jp.com> E-Mail: yj-world@yoshimura-jp.com