

HONDA NC700S/X/NC750S/X MAIN STAND STOPPER SET

Be sure to read the instruction carefully before starting the work. It is necessary to follow the contents to install Yoshimura product.

Product information



- CAUTION** Before beginning installation, let motorcycle cool down.
- CAUTION** Be sure not to damage each part during installation.
- CAUTION** Torque specification must be followed. If neglected, it may cause bolt and nut to fall off and damage to Yoshimura product and motorcycle.

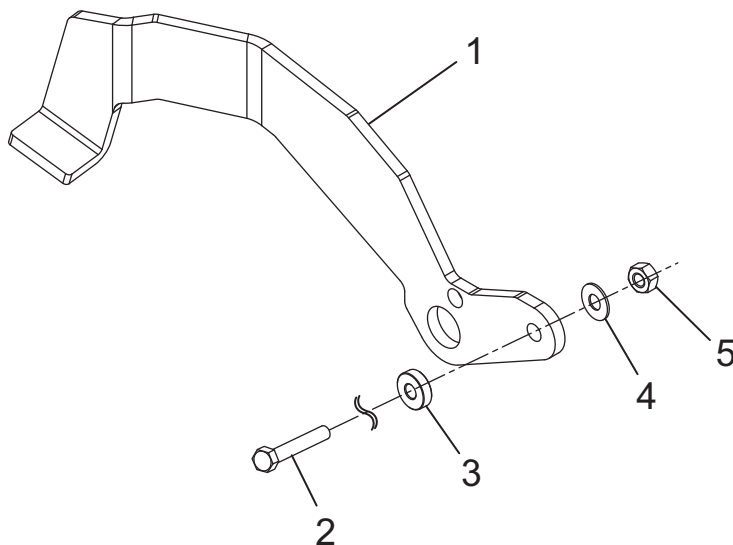
1. Product Information :

Description	Honda NC700S/X/NC750S/X Main Stand Stopper Set
Part Number	194-47A-0010
Main Material	Steel

2. Contents:

No.	Descriptions	Part No.	Q'ty	No.	Descriptions	Part No.	Q'ty
1	Main Stand Stopper	116-47A-0300	1	4	Washer M8x20	812-108-2000	1
2	Hex Head Bolt M8x65	802-208X5065	1	5	U-Nut M8	820-008-1250	1
3	Spacer 8-20-7	860-008-2007	1				

Parts Diagram



3. Installation steps:

- 1) Check that all the component parts are in hand.
- 2) If main stand is already mounted on the vehicle, remove it to install the Main Stand Stopper Set.

DANGER When removing silencer assembly, be careful not to damage frame or other components.

CAUTION Be careful not to fell the vehicle down when removing main stand.

REFERENCE It is recommended to do this procedure with 2 people.

3) Remove stock muffler or Yoshimura Slip-On from vehicle.

4) Remove stock bolt and washer which is mounting stock tailpipe. (See Fig.1) The washer removed at this stage will be used when installing Main Stand Stopper Set.

5) Mount main stand spring hook which is supplied with genuine main stand on frame if it is not done yet. (See Fig.2)

Tightening Torque Spring hook : 22Nm

CAUTION Torque specification must be followed.

6) Mount Main Stand Stopper to the frame with the stock tailpipe with Hex Head Bolt M8x65, Spacer 8-20-7, Washer M8x20, U-Nut M8 and stock washer which is removed at step 4). Tighten bolt by hand only at this stage. (See Fig.1 & 2) Make sure spring hook head is coming out from a hole of Main Stand Stopper at that time. (See Fig.2)

7) Tighten and torque Hex Head Bolt M8x65.

Tightening Torque Hex Head Bolt M8 : 23Nm

CAUTION Torque specification must be followed.

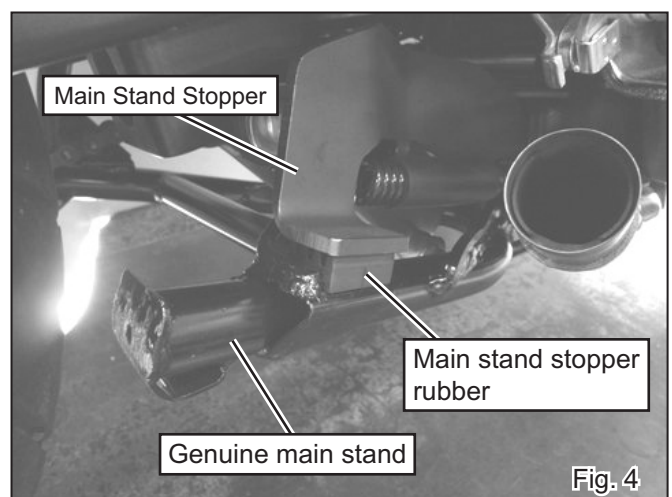
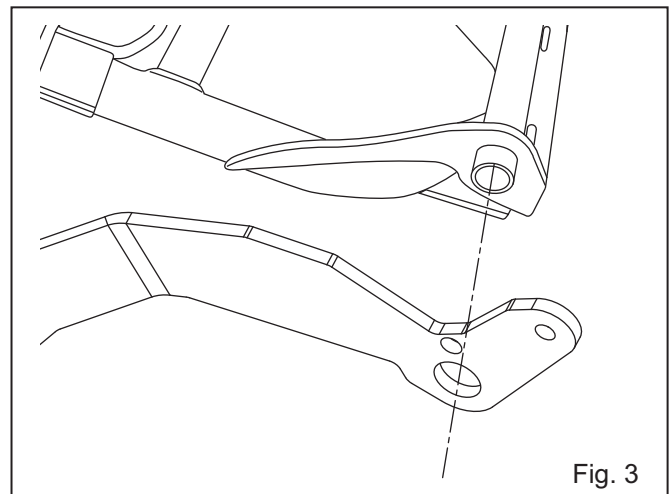
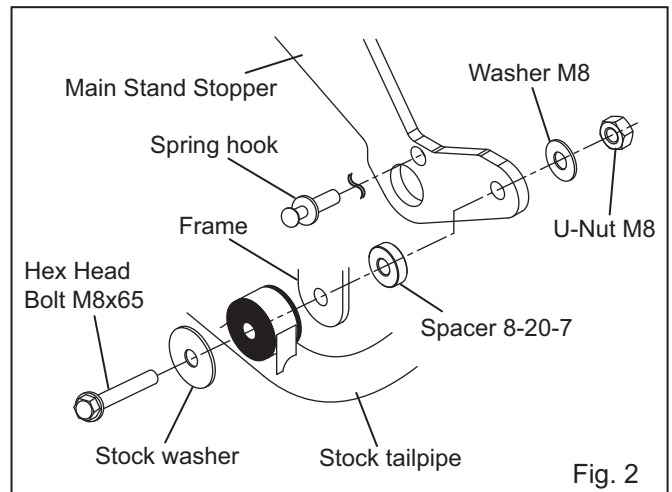
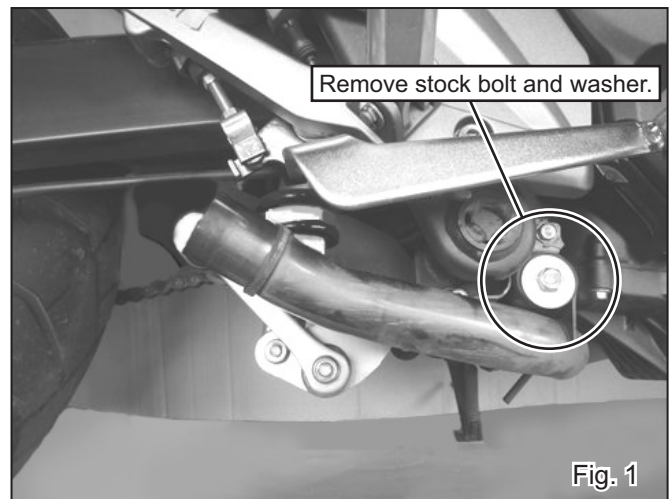
8) Mount rubber stopper which is supplied with genuine main stand on the main stand if it is not done yet. (See Fig.3)

9) Mount Main Stand Stopper to the collar of main stand shaft hole, and then mount main stand on the vehicle with the shaft. Tighten and torque bolt which fix main stand.

Tightening Torque Bolt : 12Nm

CAUTION Torque specification must be followed.

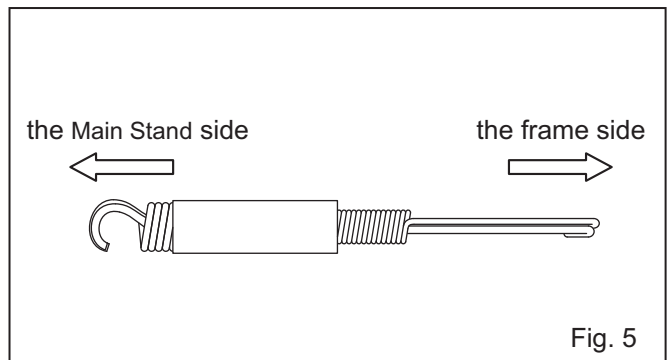
10) Move the main stand and check that the main stand stopper rubber is right location. (See Fig. 4)



- 11) Check the mounting direction and then mount main stand spring between main stand and frame. (See Fig. 5)

⚠ DANGER It is recommended to do this procedure with 2 people. Be careful the work since this spring is very high tension.

⚠ CAUTION Be careful not to fell the vehicle down when pulling the main stand spring.



- 12) Hold and push up the Main Stand Stopper, tighten and torque U-Nut M8.

Tightening Torque U-Nut M8 : 23Nm

⚠ CAUTION Torque specification must be followed.

- 13) Follow further procedures of installing Yoshimura slip-on from its installation instruction manual.



- CAUTIONS AFTER INSTALLATION -

- ⊙ Check each bolt sometimes to see that there is no failure condition such as poor tightening.
- ⊙ Quality control is implemented on all products. If, however, any defect or failure is found, please notify Yoshimura Japan through the selling dealer. Necessary technical service or replacing of the product will be made.
- ⊙ Due to improvement, the specifications and price of the product are subject to change without notice.
- ⊙ For any information regarding this product, please address inquiries to Yoshimura Japan Co., Ltd.

Yoshimura Japan Co., Ltd.

6748 Nakatsu, Aikawa, Aiko, Kanagawa 243-0303 Japan

Web site: <http://www.yoshimura-jp.com> E-Mail: yj-world@yoshimura-jp.com