

EXHAUST CONTROL VALVE CANCELLER WITH SENSOR ADAPTER

Be sure to read the instruction carefully before starting the work. It is necessary to follow the contents to install Yoshimura product.



- ⚠ CAUTION** This product is used only when Yoshimura Racing Full System is mounted with STD ECU.
- ⚠ CAUTION** Be sure not to damage each parts during installation.
- ⚠ CAUTION** Torque specification must be followed. If neglected, it may cause bolt and nut to fall off and damage to Yoshimura product and motorcycle.
- ⚠ CAUTION** While installing this product, refer Suzuki genuine service manual and installation instruction manual of Yoshimura Racing Full System as well as this manual.

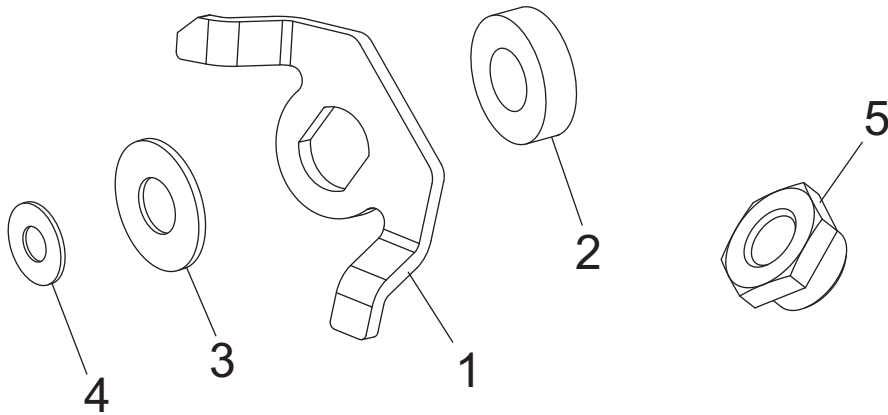
1. Product Information:

Description	Exhaust Control Valve Canceller with Sensor Adapter
Part Number	:194-519-0011

2. Contents:

No.	Descriptions	Part No.	Q'ty	No.	Descriptions	Part No.	Q'ty
1	Exhaust Control Valve Canceller Bracket	148-984-0021	1	4	Washer M5	812-205-1512	1
2	Aluminum Spacer 12-20-7	860-012-2007	1	5	Sensor Adapter	862-218-1210	1
3	Washer M12	812-512-1815	1				

Parts Diagram



3. Installation steps

- 1) Check all the component parts are in hand.
- 2) According to Suzuki service manual, remove exhaust valve wire from stock exhaust system.

⚠ DANGER Do not turn on ignition switch before complete step 5). If neglected, it may cause serious damage to Exhaust Control Valve Actuator (EXCVA).

- 3) Remove motor unit from motorcycle after disconnecting coupler and take exhaust valve wires off motor unit.

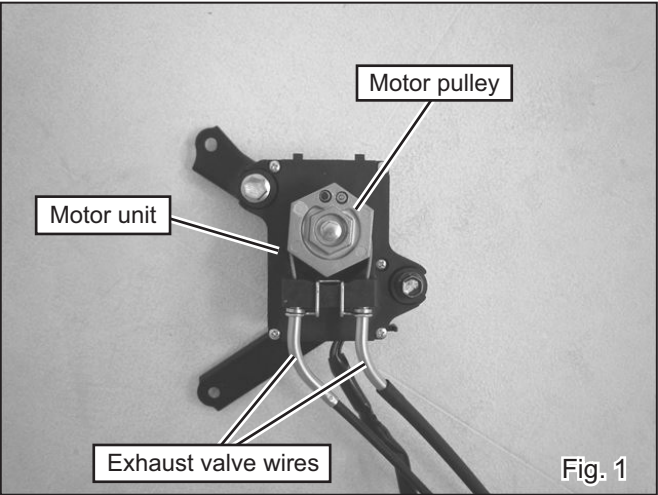


Fig. 1

- 4) Unscrew stock bolt from motor pulley on motor unit with caution not to turn the pulley. Then remove pulley from motor unit. (See Fig.1 on previous page)

CAUTION Make sure not to turn motor pulley while the bolt is unscrewed. If neglected, it may cause serious damage to motor unit.

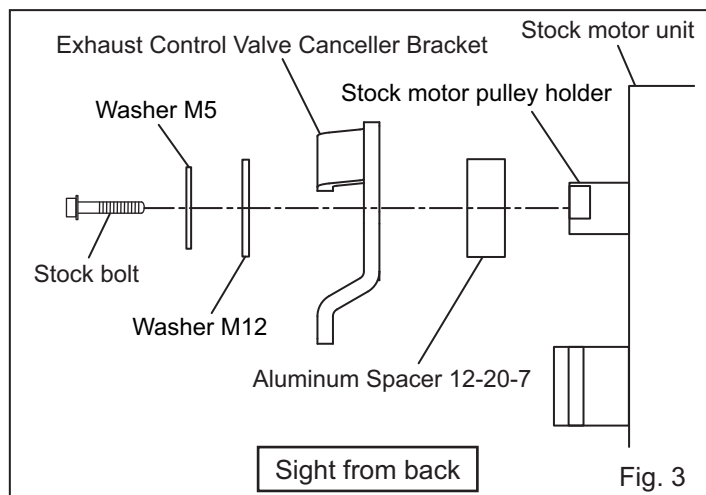
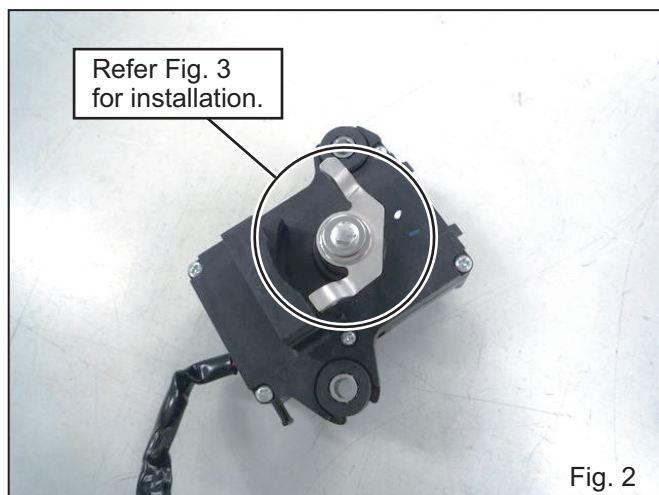
- 5) Mount Exhaust Control Valve Cancellor Bracket on motor unit with Aluminum Spacer 12-20-7, Washer M12, Washer M5 and stock bolt removed from motor pulley at step 4) (See Fig. 2 & 3). Tighten and torque the bolt.

Tightening Torque Stock bolt : 5Nm

CAUTION Torque specification must be followed.

CAUTION Make sure not to turn bracket while the bolt is screwed. If neglected, it may cause serious damage to motor unit.

CAUTION Make sure to mount Exhaust Control Valve Cancellor Bracket in right direction.



- 6) Put motor unit back on motorcycle and reconnect coupler.
- 7) Referring installation instruction of Yoshimura exhaust system, mount Yoshimura exhaust system.
- 8) Screw Sensor Adapter into sensor boss on Yoshimura exhaust system with copper washer attached to the exhaust system. Tighten and torque the adaptor.

Tightening Torque Sensor Adapter : 45Nm

CAUTION Torque specification must be followed.

- 9) Screw stock O2 sensor into Sensor Adapter screwed at step 8). Tighten and torque the sensor.

Tightening Torque O2 sensor : 25Nm

CAUTION Torque specification must be followed.

- 10) 02センサーのカプラーを元に戻して下さい

- CAUTIONS AFTER INSTALLATION -

- ◎ Check each bolt sometimes to see that there is no failure condition such as poor tightening.
- ◎ Quality control is implemented on all products. If, however, any defect or failure is found, please notify Yoshimura Japan through the selling dealer. Necessary technical service or replacing of the product will be made.
- ◎ Due to improvement, the specifications and price of the product are subject to change without notice.
- ◎ For any information regarding this product, please address inquiries to Yoshimura Japan Co., Ltd.

Yoshimura Japan Co., Ltd.

6748 Nakatsu, Aikawa, Aiko, Kanagawa 243-0303 Japan

Web site: <http://www.yoshimura-jp.com> E-Mail: yj-world@yoshimura-jp.com