

## SUZUKI HAYABUSA STREET SPORTS SLIP-ON HEPTA FORCE

Be sure to read the instruction carefully before starting the work. It is necessary to follow the contents to install Yoshimura product.

Product information



### 1. Product Information :

Description	SUZUKI Hayabusa Street Sports Slip-On Hepta Force		
Main Material	Stainless Steel	Cyclone Type	S592SHFC1
Part Number, Type & Weight [STD: 6.9kg]	180-592-L02C0 (SMS: Metal Magic Sleeve & Stainless End) 5.9kg		
	180-592-L02G0 (SMC: Metal Magic Sleeve & Carbon End) 5.9kg		
	180-592-L03G0 (SSFC: Satin Finish Sleeve & Carbon End) 5.9kg		
	180-592-L06G0 (STBC: Titanium Blue Sleeve & Carbon End) 5.3kg		

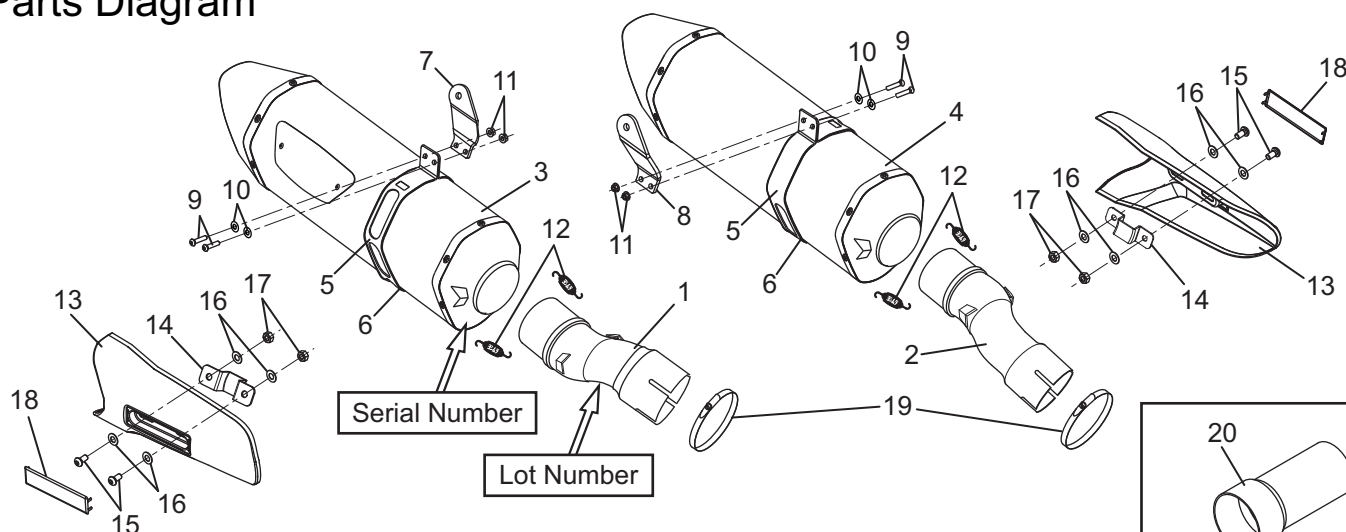
### 2. Applicable Model :

Model	SUZUKI Hayabusa ('21)
-------	-----------------------

### 3. Contents:

No.	Descriptions	Part No.	Q'ty	No.	Descriptions	Part No.	Q'ty
1	Tailpipe, Right	115-592-L000	1	9	Button Bolt M6x15	803-206-4015	4
2	Tailpipe, Left	115-592-L00A	1	10	Washer M6x13	812-206-1310	4
3	Silencer Assy, (SMS) Right	186-592-L02C0	1	11	Flange Nut M6	823-006-1000	4
	Silencer Assy, (SMC) Right	186-592-L02G0		12	Exhaust Spring	118-001-0000	4
	Silencer Assy, (SSFC) Right	186-592-L03G0		13	Carbon Heat Guard	161-592-0600	2
	Silencer Assy, (STBC) Right	186-592-L06G0		14	Heat Guard Bracket	161-630-0010	2
4	Silencer Assy, (SMS) Left	186-592-L02CA	1	15	Button Bolt M5x10	803-205-3010	4
	Silencer Assy, (SMC) Left	186-592-L02GA		16	Washer M5x15	812-205-1512	8
	Silencer Assy, (SSFC) Left	186-592-L03GA		17	U Nut M5	820-005-0800	4
	Silencer Assy, (STBC) Left	186-592-L06GA		18	Metal Plate	141-592-0000	2
5	Silencer Band	162-50R-J530	2	19	Hose Band 40-60	855-209-4060	2
6	Silencer Band Rubber	896-016-0835	2	20	SD#98	138-138-4398	2
7	Silencer Bracket Right	161-592-0200	1	21	Torx Cap Bolt M6x15 with Thread lock	809-206-4015	2
8	Silencer Bracket Left	161-592-1200	1				

### Parts Diagram



\*This product is required to mount with Suzuki genuine gaskets.

The gaskets RH and LH are not identical and make sure to use correct item in the correct side.

