

SUZUKI GSX-S750 / GSR750 STREET SPORTS FULL SYSTEM R-11 Single Exit

Product information



Be sure to read the instruction carefully before starting the work. It is necessary to follow the contents to install Yoshimura product.

- CAUTION** Before beginning installation, let motorcycle cool down.
- CAUTION** Be sure not to damage each part during installation.
- CAUTION** Torque specification must be followed. If neglected, it may cause bolt and nut to fall off and damage to Yoshimura product and motorcycle.
- CAUTION** Metal Magic sleeve is coated with heat-resistant paint. Handle with care not to be hit or scratched by surroundings as the coating may come off. When cleaning silencer, use soft cloth with dish soap but do not use metal polish or chemical cleaner.
- CAUTION** Titanium Blue sleeve is colored by anodizing. Handle with care as the color may change. When cleaning silencer, use soft cloth with dish soap but do not use metal polish or chemical cleaner.

1. Product Information :

Description	SUZUKI GSX-S750 / GSR750 Street Sports Full System R-11 Single Exit <small>Note: Exhaust Control Valve Cancellor is required for GSR750.</small>			
Part Number	Metal Magic Sleeve (SM)	: 170-150-5F20	Cyclone Type	S150S11C1
	Satin Finish Sleeve (SSF)	: 170-150-5F30	Main Material	Stainless steel
	Titanium Blue Sleeve (STB)	: 170-150-5F80B	Weight	(SM) & (SSF) : 5.8kg
			[STD : 9.3kg]	(STB) : 5.6kg

2. Contents:

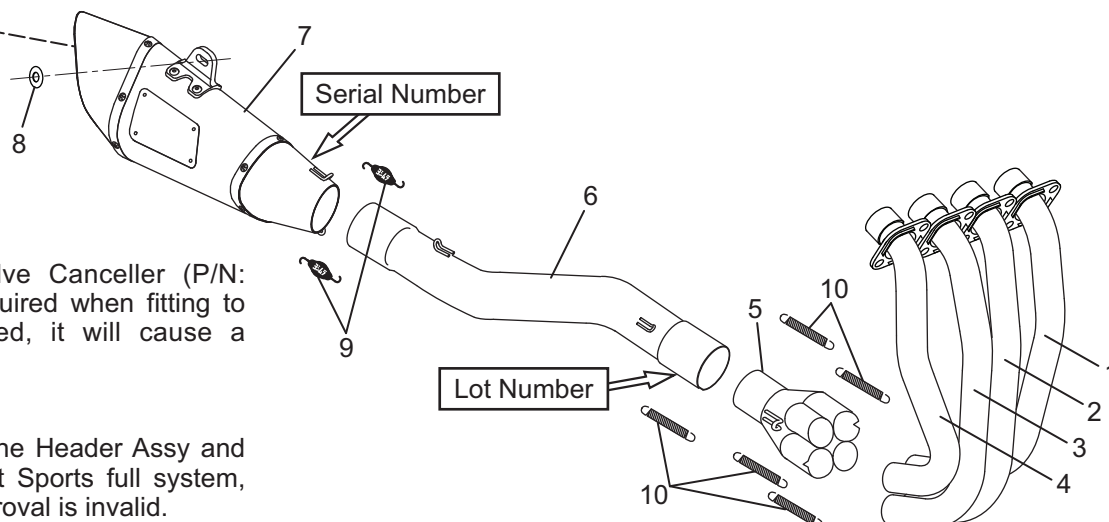
No.	Descriptions	Part No.	Q'ty	No.	Descriptions	Part No.	Q'ty
1	Exhaust Pipe #1	171-150-5F00	1	8	Washer M8x26	812-108-2600	1
2	Exhaust Pipe #2	172-150-5F00	1	9	Exhaust Spring (Short)	118-001-0000	2
3	Exhaust Pipe #3	173-150-5F00	1	10	Exhaust Spring (Long)	118-000-1000	5
4	Exhaust Pipe #4	174-150-5F00	1	*	Spring Inner Tube	118-000-1100	5
5	Exhaust Collector	119-501-5000	1				
6	Tailpipe	175-150-5F00	1				
7	Silencer Assy, (SM)	1A6-158-5E20	1				
	Silencer Assy, (SSF)	1A6-158-5E30					
	Silencer Assy, (STB)	1A6-158-5E80					

3. Optional Part :

Description	Part No.
Carbon Heat Guard Set TYPE-2	161-000-A620

Parts Diagram

SD#97 (Pre-installed)
Parts No. : 138-138-2797-01



CAUTION

Exhaust Control Valve Cancellor (P/N: 194-519-0021) is required when fitting to GSR750. If neglected, it will cause a serious damage.

CAUTION

In combination with the Header Assy and Tailpipe of this Street Sports full system, the silencer EEC Approval is invalid.